

C4orf33 antibody - C-terminal region

Rabbit Polyclonal Antibody
Catalog # AI13343

Product Information

Application	WB
Primary Accession	Q8N1A6
Other Accession	NM_001099783 , NP_001093253
Reactivity	Human, Mouse, Rat, Rabbit, Pig, Dog, Guinea Pig, Horse, Bovine
Predicted	Human, Chicken, Dog
Host	Rabbit
Clonality	Polyclonal
Calculated MW	23468

Additional Information

Gene ID	132321
Alias Symbol	FLJ33703
Other Names	UPF0462 protein C4orf33, C4orf33
Format	Liquid. Purified antibody supplied in 1x PBS buffer with 0.09% (w/v) sodium azide and 2% sucrose.
Reconstitution & Storage	Add 50 ul of distilled water. Final anti-C4orf33 antibody concentration is 1 mg/ml in PBS buffer with 2% sucrose. For longer periods of storage, store at 20°C. Avoid repeat freeze-thaw cycles.
Precautions	C4orf33 antibody - C-terminal region is for research use only and not for use in diagnostic or therapeutic procedures.

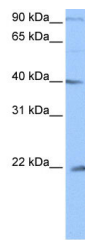
Protein Information

Name	C4orf33
-------------	---------

References

Ota T., et al. Nat. Genet. 36:40-45(2004).
Bechtel S., et al. BMC Genomics 8:399-399(2007).
Hillier L.W., et al. Nature 434:724-731(2005).
Mural R.J., et al. Submitted (SEP-2005) to the EMBL/GenBank/DDBJ databases.
Burkard T.R., et al. BMC Syst. Biol. 5:17-17(2011).

Images



WB Suggested Anti-C4orf33 Antibody Titration: 0.2-1
 $\mu\text{g/ml}$
Positive Control: Jurkat cell lysate

Please note: All products are 'FOR RESEARCH USE ONLY. NOT FOR USE IN DIAGNOSTIC OR THERAPEUTIC PROCEDURES'.