

# Ela1 antibody - middle region

Rabbit Polyclonal Antibody

Catalog # AI13355

## Product Information

---

<b>Application</b>	WB
<b>Primary Accession</b>	<a href="#">Q91X79</a>
<b>Other Accession</b>	<a href="#">NM_033612</a> , <a href="#">NP_291090</a>
<b>Reactivity</b>	Human, Mouse, Rat, Rabbit, Pig, Dog, Horse, Bovine
<b>Predicted</b>	Human, Mouse, Rat, Rabbit, Pig, Dog, Bovine
<b>Host</b>	Rabbit
<b>Clonality</b>	Polyclonal
<b>Calculated MW</b>	28901

## Additional Information

---

<b>Gene ID</b>	109901
<b>Alias Symbol</b> <b>Other Names</b>	1810009A17Rik, 1810062B19Rik, Ela-1, Ela1, PC-TsF Chymotrypsin-like elastase family member 1, 3.4.21.36, Elastase-1, Cela1, Ela1
<b>Format</b>	Liquid. Purified antibody supplied in 1x PBS buffer with 0.09% (w/v) sodium azide and 2% sucrose.
<b>Reconstitution &amp; Storage</b>	Add 50 ul of distilled water. Final anti-Ela1 antibody concentration is 1 mg/ml in PBS buffer with 2% sucrose. For longer periods of storage, store at 20°C. Avoid repeat freeze-thaw cycles.
<b>Precautions</b>	Ela1 antibody - middle region is for research use only and not for use in diagnostic or therapeutic procedures.

## Protein Information

---

<b>Name</b>	Cela1
<b>Synonyms</b>	Ela1
<b>Function</b>	Serine proteases that hydrolyze many proteins in addition to elastin.
<b>Cellular Location</b>	Secreted {ECO:0000250 UniProtKB:P00772}.

## References

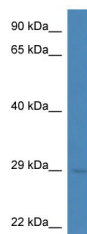
---

Carninci P., et al. Science 309:1559-1563(2005).

Church D.M.,et al.PLoS Biol. 7:E1000112-E1000112(2009).  
Mural R.J.,et al.Submitted (SEP-2005) to the EMBL/GenBank/DDBJ databases.  
Yamasaki N.,et al.Eur. J. Immunol. 17:247-253(1987).

## Images

---



WB Suggested Anti-Ela1 Antibody Titration: 1.0 µg/ml  
Positive Control: Mouse Kidney

Please note: All products are 'FOR RESEARCH USE ONLY. NOT FOR USE IN DIAGNOSTIC OR THERAPEUTIC PROCEDURES'.