

# AP1M2 antibody - N-terminal region

Rabbit Polyclonal Antibody

Catalog # AI13364

## Product Information

---

<b>Application</b>	WB
<b>Primary Accession</b>	<a href="#">Q9Y6Q5</a>
<b>Other Accession</b>	<a href="#">NM_005498</a> , <a href="#">NP_005489</a>
<b>Reactivity</b>	Human, Mouse, Rat, Rabbit, Zebrafish, Pig, Dog, Guinea Pig, Horse, Bovine, Yeast
<b>Predicted Host</b>	Human, Mouse, Zebrafish, Dog, Guinea Pig, Bovine
<b>Clonality</b>	Rabbit
<b>Calculated MW</b>	Polyclonal 48108

## Additional Information

---

<b>Gene ID</b>	10053
<b>Alias Symbol Other Names</b>	HSMU1B, MU-1B, MU1B, mu2, AP1-mu2 AP-1 complex subunit mu-2, AP-mu chain family member mu1B, Adaptor protein complex AP-1 subunit mu-2, Adaptor-related protein complex 1 subunit mu-2, Clathrin assembly protein complex 1 mu-2 medium chain 2, Golgi adaptor HA1/AP1 adaptin mu-2 subunit, Mu-adaptin 2, Mu1B-adaptin, AP1M2
<b>Format</b>	Liquid. Purified antibody supplied in 1x PBS buffer with 0.09% (w/v) sodium azide and 2% sucrose.
<b>Reconstitution &amp; Storage</b>	Add 50 ul of distilled water. Final anti-AP1M2 antibody concentration is 1 mg/ml in PBS buffer with 2% sucrose. For longer periods of storage, store at 20°C. Avoid repeat freeze-thaw cycles.
<b>Precautions</b>	AP1M2 antibody - N-terminal region is for research use only and not for use in diagnostic or therapeutic procedures.

## Protein Information

---

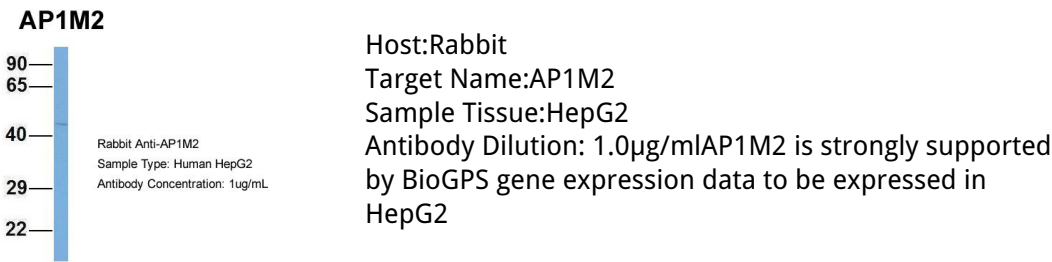
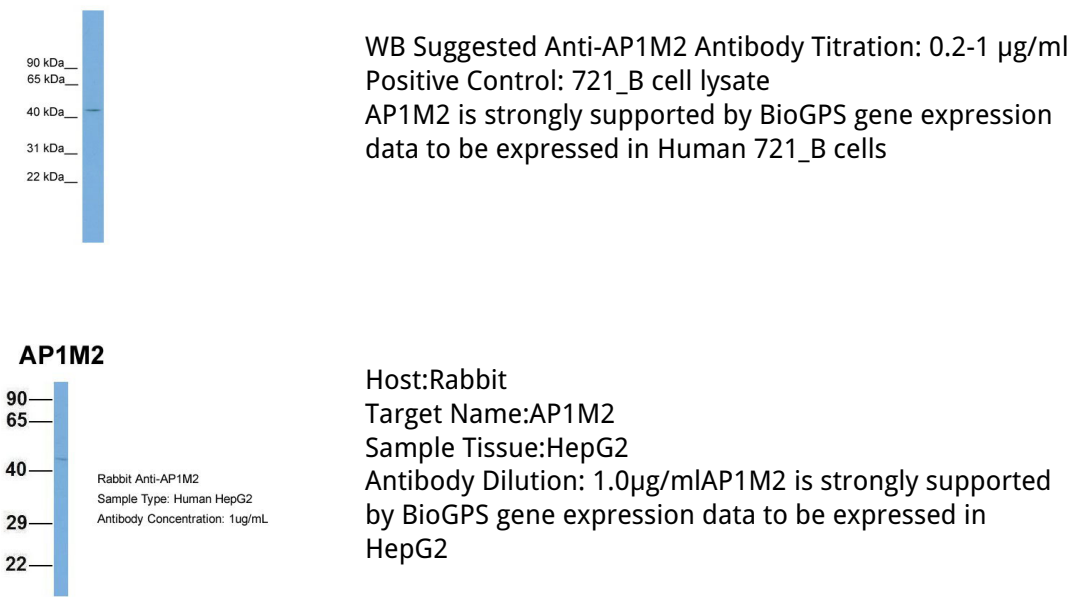
<b>Name</b>	AP1M2
<b>Function</b>	Subunit of clathrin-associated adaptor protein complex 1 that plays a role in protein sorting in the trans-Golgi network (TGN) and endosomes. The AP complexes mediate the recruitment of clathrin to membranes and the recognition of sorting signals within the cytosolic tails of transmembrane cargo molecules.

<b>Cellular Location</b>	Golgi apparatus. Cytoplasmic vesicle, clathrin- coated vesicle membrane; Peripheral membrane protein; Cytoplasmic side Note=Component of the coat surrounding the cytoplasmic face of coated vesicles located at the Golgi complex
--------------------------	--

## References

Ohno H.,et al.FEBS Lett. 449:215-220(1999).  
Ota T.,et al.Nat. Genet. 36:40-45(2004).  
Mural R.J.,et al.Submitted (JUL-2005) to the EMBL/GenBank/DDBJ databases.  
Burkard T.R.,et al.BMC Syst. Biol. 5:17-17(2011).

## Images



Please note: All products are 'FOR RESEARCH USE ONLY. NOT FOR USE IN DIAGNOSTIC OR THERAPEUTIC PROCEDURES'.