

# ACTR1B antibody - middle region

Rabbit Polyclonal Antibody

Catalog # AI13367

## Product Information

---

<b>Application</b>	WB
<b>Primary Accession</b>	<a href="#">P42025</a>
<b>Other Accession</b>	<a href="#">NM_005735</a> , <a href="#">NP_005726</a>
<b>Reactivity</b>	Human, Mouse, Rat, Rabbit, Zebrafish, Dog, Guinea Pig, Horse, Bovine, Yeast
<b>Predicted</b>	Human, Mouse, Rat, Pig, Dog, Guinea Pig, Horse
<b>Host</b>	Rabbit
<b>Clonality</b>	Polyclonal
<b>Calculated MW</b>	42293

## Additional Information

---

<b>Gene ID</b>	10120
<b>Alias Symbol</b>	ARP1B, CTRN2, PC3
<b>Other Names</b>	Beta-centractin, Actin-related protein 1B, ARP1B, ACTR1B, CTRN2
<b>Format</b>	Liquid. Purified antibody supplied in 1x PBS buffer with 0.09% (w/v) sodium azide and 2% sucrose.
<b>Reconstitution &amp; Storage</b>	Add 50 ul of distilled water. Final anti-ACTR1B antibody concentration is 1 mg/ml in PBS buffer with 2% sucrose. For longer periods of storage, store at 20°C. Avoid repeat freeze-thaw cycles.
<b>Precautions</b>	ACTR1B antibody - middle region is for research use only and not for use in diagnostic or therapeutic procedures.

## Protein Information

---

<b>Name</b>	ACTR1B
<b>Synonyms</b>	CTRN2
<b>Function</b>	Component of a multi-subunit complex involved in microtubule based vesicle motility. It is associated with the centrosome.
<b>Cellular Location</b>	Cytoplasm, cytoskeleton. Cytoplasm, cytoskeleton, microtubule organizing center, centrosome

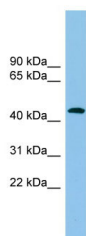
## References

---

Clark S.W.,et al.Mol. Biol. Cell 5:1301-1310(1994).  
Hillier L.W.,et al.Nature 434:724-731(2005).  
Mural R.J.,et al.Submitted (SEP-2005) to the EMBL/GenBank/DDBJ databases.  
Lubec G.,et al.Submitted (MAR-2007) to UniProtKB.  
Gauci S.,et al.Anal. Chem. 81:4493-4501(2009).

## Images

---



WB Suggested Anti-ACTR1B Antibody Titration: 0.2-1  
µg/ml  
ELISA Titer: 1:62500  
Positive Control: 293T cell lysate  
ACTR1B is supported by BioGPS gene expression data to  
be expressed in HEK293T

Please note: All products are 'FOR RESEARCH USE ONLY. NOT FOR USE IN DIAGNOSTIC OR THERAPEUTIC PROCEDURES'.