

ACTR1B antibody - C-terminal region

Rabbit Polyclonal Antibody

Catalog # AI13368

Product Information

Application	WB
Primary Accession	P42025
Other Accession	NM_005735 , NP_005726
Reactivity	Human, Mouse, Rat, Rabbit, Zebrafish, Pig, Dog, Guinea Pig, Horse, Bovine
Predicted	Mouse, Rat, Pig, Dog, Guinea Pig, Horse
Host	Rabbit
Clonality	Polyclonal
Calculated MW	42293

Additional Information

Gene ID	10120
Alias Symbol	ARP1B, CTRN2, PC3
Other Names	Beta-centractin, Actin-related protein 1B, ARP1B, ACTR1B, CTRN2
Format	Liquid. Purified antibody supplied in 1x PBS buffer with 0.09% (w/v) sodium azide and 2% sucrose.
Reconstitution & Storage	Add 50 ul of distilled water. Final anti-ACTR1B antibody concentration is 1 mg/ml in PBS buffer with 2% sucrose. For longer periods of storage, store at 20°C. Avoid repeat freeze-thaw cycles.
Precautions	ACTR1B antibody - C-terminal region is for research use only and not for use in diagnostic or therapeutic procedures.

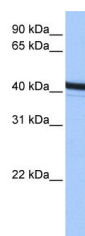
Protein Information

Name	ACTR1B
Synonyms	CTRN2
Function	Component of a multi-subunit complex involved in microtubule based vesicle motility. It is associated with the centrosome.
Cellular Location	Cytoplasm, cytoskeleton. Cytoplasm, cytoskeleton, microtubule organizing center, centrosome

References

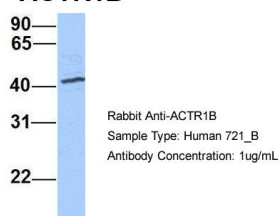
Clark S.W.,et al.Mol. Biol. Cell 5:1301-1310(1994).
Hillier L.W.,et al.Nature 434:724-731(2005).
Mural R.J.,et al.Submitted (SEP-2005) to the EMBL/GenBank/DDBJ databases.
Lubec G.,et al.Submitted (MAR-2007) to UniProtKB.
Gauci S.,et al.Anal. Chem. 81:4493-4501(2009).

Images



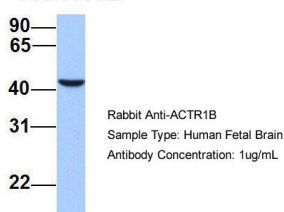
WB Suggested Anti-ACR1B Antibody Titration: 0.2-1
µg/ml
Positive Control: HepG2 cell lysate
ACR1B is supported by BioGPS gene expression data to
be expressed in HepG2

ACR1B



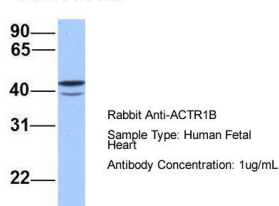
Host:Rabbit
Target Name:ACR1B
Sample Tissue:Human 721_B
Antibody Dilution: 1.0µg/ml
ACR1B is supported by BioGPS gene expression data to
be expressed in 721_B

ACR1B



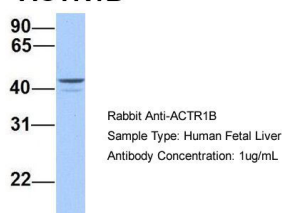
Host:Rabbit
Target Name:ACR1B
Sample Tissue:Human Fetal Brain
Antibody Dilution: 1.0µg/ml

ACR1B

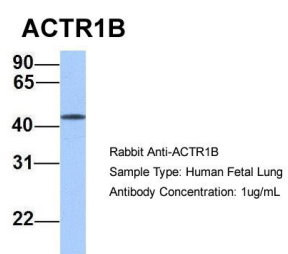


Host:Rabbit
Target Name:ACR1B
Sample Tissue:Human Fetal Heart
Antibody Dilution: 1.0µg/ml

ACR1B



Host:Rabbit
Target Name:ACR1B
Sample Tissue:Human Fetal Liver
Antibody Dilution: 1.0µg/ml



Host:Rabbit Target Name:ACTR1B Sample Tissue:Human
Fetal Lung Antibody Dilution: 1.0ug/ml

Please note: All products are 'FOR RESEARCH USE ONLY. NOT FOR USE IN DIAGNOSTIC OR THERAPEUTIC PROCEDURES'.