

Coro2b Antibody - N-terminal region

Rabbit Polyclonal Antibody
Catalog # AI13375

Product Information

Application	WB
Primary Accession	Q8BH44
Other Accession	NM_175484 , NP_780693
Reactivity	Human, Mouse, Rat, Rabbit, Pig, Dog, Guinea Pig, Horse, Bovine
Predicted	Human, Mouse, Rat, Rabbit, Pig, Dog, Guinea Pig, Horse, Bovine
Host	Rabbit
Clonality	Polyclonal
Calculated MW	54936

Additional Information

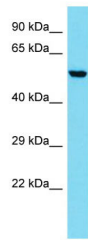
Gene ID	235431
Alias Symbol Other Names	CLIPINC, E130012P22Rik Coronin-2B, Coro2b
Format	Liquid. Purified antibody supplied in 1x PBS buffer with 0.09% (w/v) sodium azide and 2% sucrose.
Reconstitution & Storage	Add 50 ul of distilled water. Final anti-Coro2b antibody concentration is 1 mg/ml in PBS buffer with 2% sucrose. For longer periods of storage, store at 20°C. Avoid repeat freeze-thaw cycles.
Precautions	Coro2b Antibody - N-terminal region is for research use only and not for use in diagnostic or therapeutic procedures.

Protein Information

Name	Coro2b
Function	May play a role in the reorganization of neuronal actin structure.
Cellular Location	Cytoplasm, cytoskeleton.

Images

Host: Rabbit
Target Name: Coro2b



Sample Tissue: Mouse Lung lysates
Antibody Dilution: 1.0 μ g/ml

Please note: All products are 'FOR RESEARCH USE ONLY. NOT FOR USE IN DIAGNOSTIC OR THERAPEUTIC PROCEDURES'.