

TACC3 antibody - middle region

Rabbit Polyclonal Antibody

Catalog # AI13379

Product Information

Application	WB
Primary Accession	Q9Y6A5
Other Accession	NM_006342 , NP_006333
Reactivity	Human, Mouse, Rat, Rabbit, Zebrafish, Dog, Guinea Pig, Horse, Bovine
Predicted	Human, Mouse, Rat, Rabbit, Zebrafish, Pig, Chicken, Dog, Guinea Pig, Horse, Bovine
Host	Rabbit
Clonality	Polyclonal
Calculated MW	90360

Additional Information

Gene ID	10460
Alias Symbol	ERIC1, MGC117382, MGC133242, ERIC-1
Other Names	Transforming acidic coiled-coil-containing protein 3, ERIC-1, TACC3, ERIC1
Format	Liquid. Purified antibody supplied in 1x PBS buffer with 0.09% (w/v) sodium azide and 2% sucrose.
Reconstitution & Storage	Add 50 ul of distilled water. Final anti-TACC3 antibody concentration is 1 mg/ml in PBS buffer with 2% sucrose. For longer periods of storage, store at 20°C. Avoid repeat freeze-thaw cycles.
Precautions	TACC3 antibody - middle region is for research use only and not for use in diagnostic or therapeutic procedures.

Protein Information

Name	TACC3
Synonyms	ERIC1
Function	Plays a role in the microtubule-dependent coupling of the nucleus and the centrosome. Involved in the processes that regulate centrosome-mediated interkinetic nuclear migration (INM) of neural progenitors (By similarity). Acts as a component of the TACC3/ch- TOG/clathrin complex proposed to contribute to stabilization of kinetochore fibers of the mitotic spindle by acting as inter- microtubule bridge. The TACC3/ch-TOG/clathrin complex is required for the maintenance of kinetochore fiber tension (PubMed: 21297582 , PubMed: 23532825). May be involved in the control of cell

growth and differentiation. May contribute to cancer (PubMed:[14767476](#)).

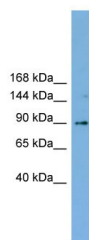
Cellular Location

Cytoplasm. Cytoplasm, cytoskeleton, microtubule organizing center, centrosome. Cytoplasm, cytoskeleton, spindle. Cytoplasm, cytoskeleton, spindle pole {ECO:0000250|UniProtKB:Q9PTG8}. Note=In complex with CKAP5 localized to microtubule plus-ends in mitosis and interphase. In complex with CKAP5 and clathrin localized to inter-microtubule bridges in mitotic spindles.

References

Still I.H.,et al.Genomics 58:165-170(1999).
McKeveney P.J.,et al.Br. J. Haematol. 112:1016-1024(2001).
Gangisetty O.,et al.Oncogene 23:2559-2563(2004).
Beausoleil S.A.,et al.Nat. Biotechnol. 24:1285-1292(2006).
Cantin G.T.,et al.J. Proteome Res. 7:1346-1351(2008).

Images



WB Suggested Anti-TACC3 Antibody Titration: 0.2-1 µg/ml
ELISA Titer: 1:1562500
Positive Control: NCI-H226 cell lysate

Please note: All products are 'FOR RESEARCH USE ONLY. NOT FOR USE IN DIAGNOSTIC OR THERAPEUTIC PROCEDURES'.