

Rasl10a antibody - N-terminal region

Rabbit Polyclonal Antibody

Catalog # AI13383

Product Information

| | |
|--------------------------|--|
| Application | WB |
| Primary Accession | Q8K5A4 |
| Other Accession | NM_145216 , NP_660251 |
| Reactivity | Human, Mouse, Rat, Rabbit, Pig, Dog, Guinea Pig, Horse, Bovine |
| Predicted | Human, Mouse, Rat, Rabbit, Pig, Dog, Guinea Pig, Horse, Bovine |
| Host | Rabbit |
| Clonality | Polyclonal |
| Calculated MW | 22792 |

Additional Information

| | |
|-------------------------------------|--|
| Gene ID | 75668 |
| Alias Symbol | 2210403B10Rik, AI852688, MGC130093, MGC130094 |
| Other Names | Ras-like protein family member 10A, Ras-like protein RRP22, Ras-related protein on chromosome 22 homolog, Rasl10a, Rrp22 |
| Format | Liquid. Purified antibody supplied in 1x PBS buffer with 0.09% (w/v) sodium azide and 2% sucrose. |
| Reconstitution & Storage | Add 50 ul of distilled water. Final anti-Rasl10a antibody concentration is 1 mg/ml in PBS buffer with 2% sucrose. For longer periods of storage, store at 20°C. Avoid repeat freeze-thaw cycles. |
| Precautions | Rasl10a antibody - N-terminal region is for research use only and not for use in diagnostic or therapeutic procedures. |

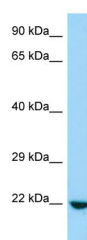
Protein Information

| | |
|--------------------------|--|
| Name | Rasl10a |
| Synonyms | Rrp22 |
| Function | Potent inhibitor of cellular proliferation. |
| Cellular Location | Cell membrane; Lipid-anchor; Cytoplasmic side. Nucleus, nucleolus. Note=May cycle in and out of the nucleolus in a GTP- dependent manner. |

References

Ehringer M.A.,et al.Submitted (MAR-2002) to the EMBL/GenBank/DDBJ databases.
Carninci P.,et al.Science 309:1559-1563(2005).
Church D.M.,et al.PLoS Biol. 7:E1000112-E1000112(2009).

Images



Host: Rabbit
Target Name: Rasl10a
Antibody Dilution: 1.0µg/ml
Sample Tissue: Mouse Lung

Please note: All products are 'FOR RESEARCH USE ONLY. NOT FOR USE IN DIAGNOSTIC OR THERAPEUTIC PROCEDURES'.