

RFPL2 antibody - C-terminal region

Rabbit Polyclonal Antibody

Catalog # AI13385

Product Information

Application	WB
Primary Accession	O75678
Other Accession	NM_001098527 , NP_001091997
Reactivity	Human, Rabbit
Predicted	Human
Host	Rabbit
Clonality	Polyclonal
Calculated MW	42077

Additional Information

Gene ID	10739
Alias Symbol	RNF79
Other Names	Ret finger protein-like 2, RING finger protein 79, RFPL2, RNF79
Format	Liquid. Purified antibody supplied in 1x PBS buffer with 0.09% (w/v) sodium azide and 2% sucrose.
Reconstitution & Storage	Add 50 ul of distilled water. Final anti-RFPL2 antibody concentration is 1 mg/ml in PBS buffer with 2% sucrose. For longer periods of storage, store at 20°C. Avoid repeat freeze-thaw cycles.
Precautions	RFPL2 antibody - C-terminal region is for research use only and not for use in diagnostic or therapeutic procedures.

Protein Information

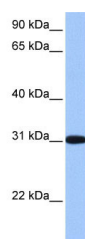
Name	RFPL2
Synonyms	RNF79
Tissue Location	Seems to be expressed in prostate and less abundantly in adult brain, fetal liver, and fetal kidney

References

Seroussi E.,et al.Genome Res. 9:803-814(1999).
Ota T.,et al.Nat. Genet. 36:40-45(2004).

Collins J.E.,et al.Genome Biol. 5:R84.1-R84.11(2004).
Dunham I.,et al.Nature 402:489-495(1999).

Images



WB Suggested Anti-RFPL2 Antibody Titration: 0.2-1 µg/ml
Positive Control: Human Liver

Please note: All products are 'FOR RESEARCH USE ONLY. NOT FOR USE IN DIAGNOSTIC OR THERAPEUTIC PROCEDURES'.