

# ASB8 antibody - N-terminal region

Rabbit Polyclonal Antibody

Catalog # AI13410

## Product Information

<b>Application</b>	WB
<b>Primary Accession</b>	<a href="#">Q9H765</a>
<b>Other Accession</b>	<a href="#">NM_024095</a> , <a href="#">NP_077000</a>
<b>Reactivity</b>	Human, Mouse, Rat, Rabbit, Zebrafish, Dog, Guinea Pig, Horse, Bovine
<b>Predicted</b>	Human, Mouse, Rat, Rabbit, Zebrafish, Chicken, Dog, Bovine
<b>Host</b>	Rabbit
<b>Clonality</b>	Polyclonal
<b>Calculated MW</b>	31642

## Additional Information

<b>Gene ID</b>	140461
<b>Alias Symbol</b>	FLJ21255, MGC5540, PP14212
<b>Other Names</b>	Ankyrin repeat and SOCS box protein 8, ASB-8, ASB8
<b>Format</b>	Liquid. Purified antibody supplied in 1x PBS buffer with 0.09% (w/v) sodium azide and 2% sucrose.
<b>Reconstitution &amp; Storage</b>	Add 50 ul of distilled water. Final anti-ASB8 antibody concentration is 1 mg/ml in PBS buffer with 2% sucrose. For longer periods of storage, store at 20°C. Avoid repeat freeze-thaw cycles.
<b>Precautions</b>	ASB8 antibody - N-terminal region is for research use only and not for use in diagnostic or therapeutic procedures.

## Protein Information

<b>Name</b>	ASB8
<b>Function</b>	May be a substrate-recognition component of a SCF-like ECS (Elongin-Cullin-SOCS-box protein) E3 ubiquitin-protein ligase complex which mediates the ubiquitination and subsequent proteasomal degradation of target proteins. Inhibits IFN-beta production through the IRF3 signaling pathway by targeting TBK1 via 'Lys-48'-linked ubiquitination, leading to its proteasomal degradation (PubMed: <a href="#">32298923</a> ).
<b>Cellular Location</b>	Cytoplasm
<b>Tissue Location</b>	Highest level of expression in skeletal muscle. Also expressed in heart, brain, placenta, liver, kidney and pancreas

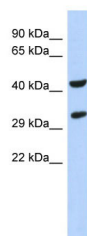
## References

---

Liu Y.,et al.Biochem. Biophys. Res. Commun. 300:972-979(2003).  
Ota T.,et al.Nat. Genet. 36:40-45(2004).  
Van Damme P.,et al.Proc. Natl. Acad. Sci. U.S.A. 109:12449-12454(2012).

## Images

---



WB Suggested Anti-ASB8 Antibody Titration: 0.2-1 µg/ml  
ELISA Titer: 1:312500  
Positive Control: Human Pancreas

Please note: All products are 'FOR RESEARCH USE ONLY. NOT FOR USE IN DIAGNOSTIC OR THERAPEUTIC PROCEDURES'.