

# ACTRT2 antibody - C-terminal region

Rabbit Polyclonal Antibody

Catalog # AI13422

## Product Information

---

<b>Application</b>	WB
<b>Primary Accession</b>	<a href="#">Q8TDY3</a>
<b>Other Accession</b>	<a href="#">NM_080431</a> , <a href="#">NP_536356</a>
<b>Reactivity</b>	Human, Mouse, Rat, Pig, Dog, Guinea Pig, Horse, Bovine
<b>Predicted</b>	Mouse, Rat, Dog
<b>Host</b>	Rabbit
<b>Clonality</b>	Polyclonal
<b>Calculated MW</b>	41702

## Additional Information

---

<b>Gene ID</b>	140625
<b>Alias Symbol</b>	ARPM2, ARPT2, Arp-T2, FLJ25424, HARPM2
<b>Other Names</b>	Actin-related protein T2, ARP-T2, Actin-related protein M2, ACTRT2, ARPM2
<b>Format</b>	Liquid. Purified antibody supplied in 1x PBS buffer with 0.09% (w/v) sodium azide and 2% sucrose.
<b>Reconstitution &amp; Storage</b>	Add 50 ul of distilled water. Final anti-ACTRT2 antibody concentration is 1 mg/ml in PBS buffer with 2% sucrose. For longer periods of storage, store at 20°C. Avoid repeat freeze-thaw cycles.
<b>Precautions</b>	ACTRT2 antibody - C-terminal region is for research use only and not for use in diagnostic or therapeutic procedures.

## Protein Information

---

<b>Name</b>	ACTRT2
<b>Synonyms</b>	ARPM2
<b>Cellular Location</b>	Cytoplasm, cytoskeleton.

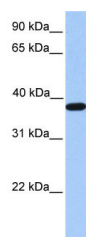
## References

---

Harata M.,et al.Biochim. Biophys. Acta 1522:130-133(2001).  
Heid H.W.,et al.Exp. Cell Res. 279:177-187(2002).  
Gregory S.G.,et al.Nature 441:315-321(2006).

## Images

---



WB Suggested Anti-ACTRT2 Antibody Titration: 0.2-1  
µg/ml  
Positive Control: Human Muscle

Please note: All products are 'FOR RESEARCH USE ONLY. NOT FOR USE IN DIAGNOSTIC OR THERAPEUTIC PROCEDURES'.