

ASZ1 antibody - middle region

Rabbit Polyclonal Antibody

Catalog # AI13424

Product Information

Application	WB
Primary Accession	Q8WWH4
Other Accession	NM_130768 , NP_570124
Reactivity	Human, Mouse, Rat, Rabbit, Dog, Guinea Pig, Horse, Bovine, Sheep
Predicted	Human, Mouse, Rat, Rabbit, Pig, Dog, Guinea Pig, Horse, Bovine, Sheep
Host	Rabbit
Clonality	Polyclonal
Calculated MW	53458

Additional Information

Gene ID	136991
Alias Symbol	ALP1, ANKL1, C7orf7, GASZ, MGC26634, Orf3, CT1.19
Other Names	Ankyrin repeat, SAM and basic leucine zipper domain-containing protein 1, Ankyrin-like protein 1, Germ cell-specific ankyrin, SAM and basic leucine zipper domain-containing protein, ASZ1 (HGNC:1350)
Format	Liquid. Purified antibody supplied in 1x PBS buffer with 0.09% (w/v) sodium azide and 2% sucrose.
Reconstitution & Storage	Add 50 ul of distilled water. Final anti-ASZ1 antibody concentration is 1 mg/ml in PBS buffer with 2% sucrose. For longer periods of storage, store at 20°C. Avoid repeat freeze-thaw cycles.
Precautions	ASZ1 antibody - middle region is for research use only and not for use in diagnostic or therapeutic procedures.

Protein Information

Name	ASZ1 (HGNC:1350)
Function	Plays a central role during spermatogenesis by repressing transposable elements and preventing their mobilization, which is essential for the germline integrity. Acts via the piRNA metabolic process, which mediates the repression of transposable elements during meiosis by forming complexes composed of piRNAs and Piwi proteins and governs the methylation and subsequent repression of transposons. Its association with pi-bodies suggests a participation in the primary piRNAs metabolic process. Required prior to the pachytene stage to facilitate the production of multiple types of piRNAs, including those associated with repeats involved in the regulation of

retrotransposons. May act by mediating protein-protein interactions during germ cell maturation (By similarity).

Cellular Location

Cytoplasm. Note=Component of the meiotic nuage, also named P granule, a germ-cell-specific organelle required to repress transposon activity during meiosis. Specifically localizes to pi-bodies, a subset of the nuage which contains primary piRNAs (By similarity).

Tissue Location

Expressed exclusively in the testis and ovary and at higher levels in the adult testis compared with the adult ovary

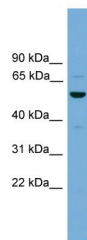
References

Yan W.,et al.Mol. Endocrinol. 16:1168-1184(2002).

Ota T.,et al.Nat. Genet. 36:40-45(2004).

Scherer S.W.,et al.Science 300:767-772(2003).

Images



WB Suggested Anti-ASZ1 Antibody Titration: 1.0 µg/ml
Positive Control: THP-1 Whole Cell

Please note: All products are 'FOR RESEARCH USE ONLY. NOT FOR USE IN DIAGNOSTIC OR THERAPEUTIC PROCEDURES'.