

PRRC1 antibody - middle region

Rabbit Polyclonal Antibody

Catalog # AI13427

Product Information

Application	WB
Primary Accession	Q96M27
Other Accession	NM_130809 , NP_570721
Reactivity	Human, Mouse, Rat, Rabbit, Zebrafish, Pig, Dog, Guinea Pig, Horse, Bovine
Predicted	Human, Mouse, Rat, Zebrafish, Pig, Chicken, Dog, Guinea Pig, Bovine
Host	Rabbit
Clonality	Polyclonal
Calculated MW	46701

Additional Information

Gene ID	133619
Alias Symbol	FLJ32875
Other Names	Protein PRRC1, Proline-rich and coiled-coil-containing protein 1, PRRC1
Format	Liquid. Purified antibody supplied in 1x PBS buffer with 0.09% (w/v) sodium azide and 2% sucrose.
Reconstitution & Storage	Add 50 ul of distilled water. Final anti-PRRC1 antibody concentration is 1 mg/ml in PBS buffer with 2% sucrose. For longer periods of storage, store at 20°C. Avoid repeat freeze-thaw cycles.
Precautions	PRRC1 antibody - middle region is for research use only and not for use in diagnostic or therapeutic procedures.

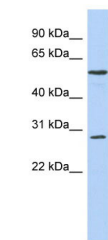
Protein Information

Name	PRRC1
Function	May act as a regulator of the protein kinase A (PKA) activity during embryonic development.
Cellular Location	Golgi apparatus. Cytoplasm {ECO:0000250 UniProtKB:Q5XJA3}
Tissue Location	Ubiquitously expressed with higher expression in kidney, liver and placenta (PubMed:15541471). Detected in embryonic kidney cells (HEK293 cells) (at protein level) (PubMed:20018846)

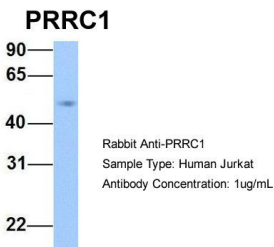
References

Kamakari S.,et al.Leuk. Res. 29:17-31(2005).
Jikuya H.,et al.Submitted (JUL-2002) to the EMBL/GenBank/DDBJ databases.
Ota T.,et al.Nat. Genet. 36:40-45(2004).
Bechtel S.,et al.BMC Genomics 8:399-399(2007).
Mural R.J.,et al.Submitted (SEP-2005) to the EMBL/GenBank/DDBJ databases.

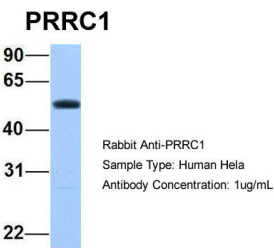
Images



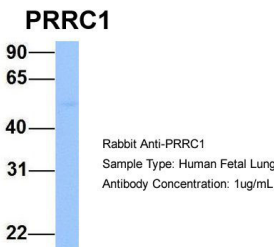
WB Suggested Anti-PRRC1 Antibody Titration: 0.2-1 µg/ml
ELISA Titer: 1:312500
Positive Control: OVCAR-3 cell lysate



Host:Rabbit
Target Name:PRRC1
Sample Tissue:Human Jurkat
Antibody Dilution: 1.0µg/mlPRRC1 is supported by BioGPS
gene expression data to be expressed in Jurkat



Host:Rabbit
Target Name:PRRC1
Sample Tissue:Human HeLa
Antibody Dilution: 1.0µg/mlPRRC1 is supported by BioGPS
gene expression data to be expressed in HeLa



Host:Rabbit
Target Name:PRRC1
Sample Tissue:Human Fetal Lung
Antibody Dilution: 1.0µg/ml

Please note: All products are 'FOR RESEARCH USE ONLY. NOT FOR USE IN DIAGNOSTIC OR THERAPEUTIC PROCEDURES'.