

# DEDD2 antibody - middle region

Rabbit Polyclonal Antibody

Catalog # AI13430

## Product Information

---

<b>Application</b>	WB
<b>Primary Accession</b>	<a href="#">Q8WXF8</a>
<b>Other Accession</b>	<a href="#">NM_133328</a> , <a href="#">NP_579874</a>
<b>Reactivity</b>	Human, Mouse, Rat, Rabbit, Dog, Guinea Pig, Horse, Bovine
<b>Predicted</b>	Human, Mouse, Rabbit, Pig, Dog, Bovine
<b>Host</b>	Rabbit
<b>Clonality</b>	Polyclonal
<b>Calculated MW</b>	36179

## Additional Information

---

<b>Gene ID</b>	162989
<b>Alias Symbol</b>	FLAME-3
<b>Other Names</b>	DNA-binding death effector domain-containing protein 2, DED-containing protein FLAME-3, FADD-like anti-apoptotic molecule 3, DEDD2, FLAME3
<b>Format</b>	Liquid. Purified antibody supplied in 1x PBS buffer with 0.09% (w/v) sodium azide and 2% sucrose.
<b>Reconstitution &amp; Storage</b>	Add 50 ul of distilled water. Final anti-DEDD2 antibody concentration is 1 mg/ml in PBS buffer with 2% sucrose. For longer periods of storage, store at 20°C. Avoid repeat freeze-thaw cycles.
<b>Precautions</b>	DEDD2 antibody - middle region is for research use only and not for use in diagnostic or therapeutic procedures.

## Protein Information

---

<b>Name</b>	DEDD2
<b>Synonyms</b>	FLAME3
<b>Function</b>	May play a critical role in death receptor-induced apoptosis and may target CASP8 and CASP10 to the nucleus. May regulate degradation of intermediate filaments during apoptosis. May play a role in the general transcription machinery in the nucleus and might be an important regulator of the activity of GTF3C3.
<b>Cellular Location</b>	Nucleus, nucleolus. Note=Nuclear, accumulated in subnuclear structures resembling nucleoli

## Tissue Location

Expressed in most tissues. High levels were found in liver, kidney, heart, ovary, spleen, testes, skeletal muscle and peripheral blood leukocytes. Expression was absent or low in colon and small intestine. Expression is relatively high in the tumor cell lines chronic myelogenous leukemia K-562 and the colorectal adenocarcinoma SW480. Expression is moderate in the cervical carcinoma HeLa, the Burkitt's lymphoma Raji, the lung carcinoma A-549, and the melanoma G-361. In contrast, two leukemia cell lines, HL-60 (promyelocytic leukemia) and MOLT-4 (lymphoblastic leukemia), show relatively low levels.

## References

---

Roth W., et al. J. Biol. Chem. 277:7501-7508(2002).

Zhan Y., et al. Cell Death Differ. 9:439-447(2002).

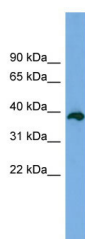
Lee J.C., et al. J. Cell Biol. 158:1051-1066(2002).

Otsuki T., et al. DNA Res. 12:117-126(2005).

Alcivar A., et al. Oncogene 22:291-297(2003).

## Images

---



WB Suggested Anti-DEDD2 Antibody Titration: 0.2-1 µg/ml

ELISA Titer: 1:1562500

Positive Control: Human Lung

Please note: All products are 'FOR RESEARCH USE ONLY. NOT FOR USE IN DIAGNOSTIC OR THERAPEUTIC PROCEDURES'.