

CDC42EP5 antibody - middle region

Rabbit Polyclonal Antibody

Catalog # AI13458

Product Information

Application	WB
Primary Accession	Q6NZY7
Other Accession	NM_145057 , NP_659494
Reactivity	Human, Mouse, Rat, Dog, Bovine
Predicted	Mouse, Rat, Pig, Bovine
Host	Rabbit
Clonality	Polyclonal
Calculated MW	15207

Additional Information

Gene ID	148170
Alias Symbol	Borg3, CEP5, MGC21945, MGC71153
Other Names	Cdc42 effector protein 5, Binder of Rho GTPases 3, CDC42EP5, BORG3, CEP5
Format	Liquid. Purified antibody supplied in 1x PBS buffer with 0.09% (w/v) sodium azide and 2% sucrose.
Reconstitution & Storage	Add 50 ul of distilled water. Final anti-CDC42EP5 antibody concentration is 1 mg/ml in PBS buffer with 2% sucrose. For longer periods of storage, store at 20°C. Avoid repeat freeze-thaw cycles.
Precautions	CDC42EP5 antibody - middle region is for research use only and not for use in diagnostic or therapeutic procedures.

Protein Information

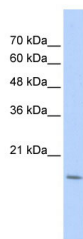
Name	CDC42EP5
Synonyms	BORG3, CEP5
Function	Probably involved in the organization of the actin cytoskeleton. May act downstream of CDC42 to induce actin filament assembly leading to cell shape changes. Induces pseudopodia formation in fibroblasts. Inhibits MAPK8 independently of CDC42 binding. Controls septin organization and this effect is negatively regulated by CDC42 (By similarity).
Cellular Location	Endomembrane system; Peripheral membrane protein. Cytoplasm, cytoskeleton

References

Grimwood J.,et al.Nature 428:529-535(2004).

Mural R.J.,et al.Submitted (JUL-2005) to the EMBL/GenBank/DDBJ databases.

Images



WB Suggested Anti-CDC42EP5 Antibody Titration: 0.2-1
µg/ml
ELISA Titer: 1:312500
Positive Control: Transfected 293T

Please note: All products are 'FOR RESEARCH USE ONLY. NOT FOR USE IN DIAGNOSTIC OR THERAPEUTIC PROCEDURES'.