

# C1orf96 antibody - N-terminal region

Rabbit Polyclonal Antibody

Catalog # AI13464

## Product Information

---

<b>Application</b>	WB
<b>Primary Accession</b>	<a href="#">Q6IQ19</a>
<b>Other Accession</b>	<a href="#">NM_145257</a> , <a href="#">NP_660300</a>
<b>Reactivity</b>	Human, Dog
<b>Predicted</b>	Human, Dog
<b>Host</b>	Rabbit
<b>Clonality</b>	Polyclonal
<b>Calculated MW</b>	30216

## Additional Information

---

<b>Gene ID</b>	126731
<b>Alias Symbol</b>	FLJ37296, FLJ41471, RP4-803J11.3, C1orf96
<b>Other Names</b>	Centriole, cilia and spindle-associated protein, CCSAP, C1orf96, CSAP
<b>Format</b>	Liquid. Purified antibody supplied in 1x PBS buffer with 0.09% (w/v) sodium azide and 2% sucrose.
<b>Reconstitution &amp; Storage</b>	Add 50 ul of distilled water. Final anti-C1orf96 antibody concentration is 1 mg/ml in PBS buffer with 2% sucrose. For longer periods of storage, store at 20°C. Avoid repeat freeze-thaw cycles.
<b>Precautions</b>	C1orf96 antibody - N-terminal region is for research use only and not for use in diagnostic or therapeutic procedures.

## Protein Information

---

<b>Name</b>	CCSAP
<b>Synonyms</b>	C1orf96, CSAP
<b>Function</b>	Plays a role in microtubule (MT) stabilization and this stabilization involves the maintenance of NUMA1 at the spindle poles. Colocalizes with polyglutamylated MTs to promote MT stabilization and regulate bipolar spindle formation in mitosis. Binding of CCSAP to centrosomes and the spindle around centrosomes during mitosis inhibits MT depolymerization, thereby stabilizing the mitotic spindle (PubMed: <a href="#">26562023</a> ). May play a role in embryonic development. May be required for proper cilia beating (By similarity).

## Cellular Location

Cytoplasm, cytoskeleton, microtubule organizing center, centrosome, centriole. Cytoplasm, cytoskeleton, spindle. Cytoplasm, cytoskeleton. Cytoplasm, cytoskeleton, cilium basal body. Cytoplasm, cytoskeleton, cilium axoneme. Cell projection, axon. Cell projection, cilium. Cytoplasm, cytoskeleton, microtubule organizing center, centrosome. Note=Localizes to two to four centrioles throughout the cell cycle. Localizes to mitotic spindle microtubules during prometaphase and throughout the remainder of mitosis. Localizes to cytoskeleton on interphase. Localizes at the ciliary transition zone which connects the basal bodies to ciliary microtubules. Colocalizes with polyglutamylated tubulin.

## References

---

Ota T.,et al.Nat. Genet. 36:40-45(2004).

Gregory S.G.,et al.Nature 441:315-321(2006).

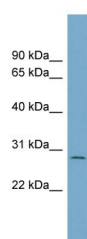
Mural R.J.,et al.Submitted (JUL-2005) to the EMBL/GenBank/DDBJ databases.

Backer C.B.,et al.Mol. Biol. Cell 23:2122-2130(2012).

Van Damme P.,et al.Proc. Natl. Acad. Sci. U.S.A. 109:12449-12454(2012).

## Images

---



WB Suggested Anti-C1orf96 Antibody Titration: 0.2-1  
µg/ml  
Positive Control: ACHN cell lysate

Please note: All products are 'FOR RESEARCH USE ONLY. NOT FOR USE IN DIAGNOSTIC OR THERAPEUTIC PROCEDURES'.