

C1orf96 antibody - middle region

Rabbit Polyclonal Antibody

Catalog # AI13465

Product Information

Application	WB
Primary Accession	Q6IQ19
Other Accession	NM_145257 , NP_660300
Reactivity	Human, Mouse, Rat, Rabbit, Zebrafish, Pig, Dog, Guinea Pig, Horse, Bovine
Predicted	Rabbit, Chicken, Dog, Guinea Pig, Horse, Bovine
Host	Rabbit
Clonality	Polyclonal
Calculated MW	30216

Additional Information

Gene ID	126731
Alias Symbol	FLJ37296, FLJ41471, RP4-803J11.3, C1orf96
Other Names	Centriole, cilia and spindle-associated protein, CCSAP, C1orf96, CSAP
Format	Liquid. Purified antibody supplied in 1x PBS buffer with 0.09% (w/v) sodium azide and 2% sucrose.
Reconstitution & Storage	Add 50 ul of distilled water. Final anti-C1orf96 antibody concentration is 1 mg/ml in PBS buffer with 2% sucrose. For longer periods of storage, store at 20°C. Avoid repeat freeze-thaw cycles.
Precautions	C1orf96 antibody - middle region is for research use only and not for use in diagnostic or therapeutic procedures.

Protein Information

Name	CCSAP
Synonyms	C1orf96, CSAP
Function	Plays a role in microtubule (MT) stabilization and this stabilization involves the maintenance of NUMA1 at the spindle poles. Colocalizes with polyglutamylated MTs to promote MT stabilization and regulate bipolar spindle formation in mitosis. Binding of CCSAP to centrosomes and the spindle around centrosomes during mitosis inhibits MT depolymerization, thereby stabilizing the mitotic spindle (PubMed: 26562023). May play a role in embryonic development. May be required for proper cilia beating (By similarity).

Cellular Location

Cytoplasm, cytoskeleton, microtubule organizing center, centrosome, centriole. Cytoplasm, cytoskeleton, spindle. Cytoplasm, cytoskeleton. Cytoplasm, cytoskeleton, cilium basal body. Cytoplasm, cytoskeleton, cilium axoneme. Cell projection, axon. Cell projection, cilium. Cytoplasm, cytoskeleton, microtubule organizing center, centrosome. Note=Localizes to two to four centrioles throughout the cell cycle. Localizes to mitotic spindle microtubules during prometaphase and throughout the remainder of mitosis. Localizes to cytoskeleton on interphase. Localizes at the ciliary transition zone which connects the basal bodies to ciliary microtubules. Colocalizes with polyglutamylated tubulin.

References

Ota T.,et al.Nat. Genet. 36:40-45(2004).

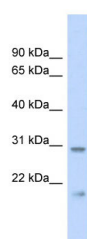
Gregory S.G.,et al.Nature 441:315-321(2006).

Mural R.J.,et al.Submitted (JUL-2005) to the EMBL/GenBank/DDBJ databases.

Backer C.B.,et al.Mol. Biol. Cell 23:2122-2130(2012).

Van Damme P.,et al.Proc. Natl. Acad. Sci. U.S.A. 109:12449-12454(2012).

Images



WB Suggested Anti-C1orf96 Antibody Titration: 0.2-1
µg/ml

ELISA Titer: 1:312500

Positive Control: Human heart

Please note: All products are 'FOR RESEARCH USE ONLY. NOT FOR USE IN DIAGNOSTIC OR THERAPEUTIC PROCEDURES'.