

C1orf216 antibody - N-terminal region

Rabbit Polyclonal Antibody

Catalog # AI13483

Product Information

Application	WB
Primary Accession	Q8TAB5
Other Accession	NM_152374 , NP_689587
Reactivity	Human, Mouse, Rat, Guinea Pig, Horse, Bovine
Predicted	Human, Mouse, Rat, Pig, Guinea Pig, Horse, Bovine
Host	Rabbit
Clonality	Polyclonal
Calculated MW	24968

Additional Information

Gene ID	127703
Alias Symbol	FLJ38984
Other Names	UPF0500 protein C1orf216, C1orf216
Format	Liquid. Purified antibody supplied in 1x PBS buffer with 0.09% (w/v) sodium azide and 2% sucrose.
Reconstitution & Storage	Add 50 ul of distilled water. Final anti-C1orf216 antibody concentration is 1 mg/ml in PBS buffer with 2% sucrose. For longer periods of storage, store at 20°C. Avoid repeat freeze-thaw cycles.
Precautions	C1orf216 antibody - N-terminal region is for research use only and not for use in diagnostic or therapeutic procedures.

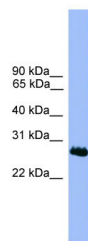
Protein Information

Name	C1orf216
-------------	----------

References

Ota T., et al. Nat. Genet. 36:40-45(2004).
Mural R.J., et al. Submitted (SEP-2005) to the EMBL/GenBank/DDBJ databases.

Images



WB Suggested Anti-C1orf216 Antibody Titration: 0.2-1
µg/ml
ELISA Titer: 1:312500
Positive Control: MCF7 cell lysate

Please note: All products are 'FOR RESEARCH USE ONLY. NOT FOR USE IN DIAGNOSTIC OR THERAPEUTIC PROCEDURES'.