

# HORMAD2 antibody - middle region

Rabbit Polyclonal Antibody

Catalog # AI13492

## Product Information

---

<b>Application</b>	WB
<b>Primary Accession</b>	<a href="#">Q8N7B1</a>
<b>Other Accession</b>	<a href="#">NM_152510</a> , <a href="#">NP_689723</a>
<b>Reactivity</b>	Human, Mouse, Rat, Pig, Dog, Guinea Pig, Horse, Bovine
<b>Predicted</b>	Pig, Dog, Guinea Pig
<b>Host</b>	Rabbit
<b>Clonality</b>	Polyclonal
<b>Calculated MW</b>	35284

## Additional Information

---

<b>Gene ID</b>	150280
<b>Alias Symbol</b>	MGC26710
<b>Other Names</b>	HORMA domain-containing protein 2, HORMAD2
<b>Format</b>	Liquid. Purified antibody supplied in 1x PBS buffer with 0.09% (w/v) sodium azide and 2% sucrose.
<b>Reconstitution &amp; Storage</b>	Add 50 ul of distilled water. Final anti-HORMAD2 antibody concentration is 1 mg/ml in PBS buffer with 2% sucrose. For longer periods of storage, store at 20°C. Avoid repeat freeze-thaw cycles.
<b>Precautions</b>	HORMAD2 antibody - middle region is for research use only and not for use in diagnostic or therapeutic procedures.

## Protein Information

---

<b>Name</b>	HORMAD2
<b>Function</b>	Essential for synapsis surveillance during meiotic prophase via the recruitment of ATR activity. Plays a key role in the male mid- pachytene checkpoint and the female meiotic prophase checkpoint: required for efficient build-up of ATR activity on unsynapsed chromosome regions, a process believed to form the basis of meiotic silencing of unsynapsed chromatin (MSUC) and meiotic prophase quality control in both sexes. Required for the DNA double-strand break- independent, BRCA1-dependent activation of ATR on the sex chromosomes that is essential for normal sex body formation (By similarity).
<b>Cellular Location</b>	Nucleus. Chromosome. Note=Preferentially localizes to unsynapsed or

desynapsed chromosomal regions during the male and female prophase I stage of meiosis. TRIP13 is required for depletion from synapsed chromosomes (By similarity).

#### Tissue Location

Highly expressed in testis (at protein level). Expressed in lung adenocarcinoma and squamous cell carcinoma (at protein level). Expressed at lower levels in the liver, brain and kidney.

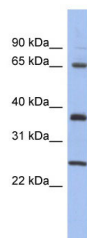
## References

---

Collins J.E.,et al.Genome Biol. 5:R84.1-R84.11(2004).  
Ota T.,et al.Nat. Genet. 36:40-45(2004).  
Dunham I.,et al.Nature 402:489-495(1999).  
Mural R.J.,et al.Submitted (JUL-2005) to the EMBL/GenBank/DDBJ databases.  
Chen Y.-T.,et al.Cancer Immun. 5:9-9(2005).

## Images

---



WB Suggested Anti-HORMAD2 Antibody Titration: 0.2-1  
µg/ml  
ELISA Titer: 1:62500  
Positive Control: Human Placenta

Please note: All products are 'FOR RESEARCH USE ONLY. NOT FOR USE IN DIAGNOSTIC OR THERAPEUTIC PROCEDURES'.