

# SASP antibody - middle region

Rabbit Polyclonal Antibody

Catalog # AI13508

## Product Information

---

<b>Application</b>	WB
<b>Primary Accession</b>	<a href="#">Q53RT3</a>
<b>Other Accession</b>	<a href="#">NM_152792</a> , <a href="#">NP_690005</a>
<b>Reactivity</b>	Human, Rat, Guinea Pig, Horse
<b>Predicted</b>	Human
<b>Host</b>	Rabbit
<b>Clonality</b>	Polyclonal
<b>Calculated MW</b>	36991

## Additional Information

---

<b>Gene ID</b>	151516
<b>Alias Symbol</b> <b>Other Names</b>	MUNO, SASPase, Taps, SASP Retroviral-like aspartic protease 1, 3.4.23.-, Skin-specific retroviral-like aspartic protease, SASPase, Skin aspartic protease, TPA-inducible aspartic proteinase-like protein, TAPS, ASPRV1 {ECO:0000250 UniProtKB:Q09PK2}
<b>Format</b>	Liquid. Purified antibody supplied in 1x PBS buffer with 0.09% (w/v) sodium azide and 2% sucrose.
<b>Reconstitution &amp; Storage</b>	Add 50 ul of distilled water. Final anti-SASP antibody concentration is 1 mg/ml in PBS buffer with 2% sucrose. For longer periods of storage, store at 20°C. Avoid repeat freeze-thaw cycles.
<b>Precautions</b>	SASP antibody - middle region is for research use only and not for use in diagnostic or therapeutic procedures.

## Protein Information

---

<b>Name</b>	ASPRV1 ( <a href="#">HGNC:26321</a> )
<b>Function</b>	Protease responsible for filaggrin processing, essential for the maintenance of a proper epidermis organization.
<b>Cellular Location</b>	Membrane; Single-pass membrane protein
<b>Tissue Location</b>	Expressed primarily in the granular layer of the epidermis and inner root sheath of hair follicles. In psoriatic skin, expressed throughout the stratum corneum. In ulcerated skin, expressed in the stratum granulosum of intact epidermis but almost absent from ulcerated regions. Expressed in

differentiated areas of squamous cell carcinomas but not in undifferentiated tumors

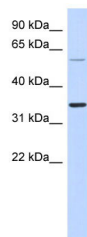
## References

---

Bernard D.,et al.J. Invest. Dermatol. 125:278-287(2005).  
Ota T.,et al.Nat. Genet. 36:40-45(2004).  
Hillier L.W.,et al.Nature 434:724-731(2005).  
Rhiemeier V.,et al.Am. J. Pathol. 168:1354-1364(2006).

## Images

---



WB Suggested Anti-SASP Antibody Titration: 0.2-1 µg/ml  
ELISA Titer: 1:1562500  
Positive Control: Human Lung

Please note: All products are 'FOR RESEARCH USE ONLY. NOT FOR USE IN DIAGNOSTIC OR THERAPEUTIC PROCEDURES'.