

ODF4 antibody - N-terminal region

Rabbit Polyclonal Antibody

Catalog # AI13510

Product Information

Application	WB
Primary Accession	Q2M2E3
Other Accession	NM_153007 , NP_694552
Reactivity	Human
Predicted	Human
Host	Rabbit
Clonality	Polyclonal
Calculated MW	29233

Additional Information

Gene ID	146852
Alias Symbol Other Names	MGC138215, MGC138219, OPPO1, CT134, CT136 Outer dense fiber protein 4, Outer dense fiber of sperm tails protein 4, Testis-specific protein oppo 1, hOPPO1, ODF4, OPPO1
Format	Liquid. Purified antibody supplied in 1x PBS buffer with 0.09% (w/v) sodium azide and 2% sucrose.
Reconstitution & Storage	Add 50 ul of distilled water. Final anti-ODF4 antibody concentration is 1 mg/ml in PBS buffer with 2% sucrose. For longer periods of storage, store at 20°C. Avoid repeat freeze-thaw cycles.
Precautions	ODF4 antibody - N-terminal region is for research use only and not for use in diagnostic or therapeutic procedures.

Protein Information

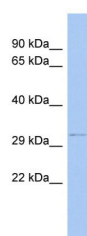
Name	ODF4
Synonyms	OPPO1
Function	Component of the outer dense fibers (ODF) of spermatozoa which could be involved in sperm tail structure, sperm movement and general organization of cellular cytoskeleton.
Cellular Location	Membrane; Multi-pass membrane protein
Tissue Location	Expressed in testis and sperm; especially localized to sperm tail (at protein level).

References

Kitamura K.,et al.Mol. Hum. Reprod. 9:237-243(2003).

Miyamoto T.,et al.Submitted (FEB-2003) to the EMBL/GenBank/DDBJ databases.

Images



WB Suggested Anti-ODF4 Antibody Titration: 0.2-1 µg/ml

ELISA Titer: 1:62500

Positive Control: Human brain

Please note: All products are 'FOR RESEARCH USE ONLY. NOT FOR USE IN DIAGNOSTIC OR THERAPEUTIC PROCEDURES'.