

# ARHGEF19 antibody - middle region

Rabbit Polyclonal Antibody

Catalog # AI13512

## Product Information

---

<b>Application</b>	WB
<b>Primary Accession</b>	<a href="#">Q8IW93</a>
<b>Other Accession</b>	<a href="#">NM_153213</a> , <a href="#">NP_694945</a>
<b>Reactivity</b>	Human, Mouse, Rat, Pig, Horse, Bovine
<b>Predicted</b>	Human, Mouse, Rat, Pig, Horse, Bovine
<b>Host</b>	Rabbit
<b>Clonality</b>	Polyclonal
<b>Calculated MW</b>	89197

## Additional Information

---

<b>Gene ID</b>	128272
<b>Alias Symbol</b>	FLJ33962, RP4-733M16.1, WGEF
<b>Other Names</b>	Rho guanine nucleotide exchange factor 19, Ephexin-2, ARHGEF19
<b>Format</b>	Liquid. Purified antibody supplied in 1x PBS buffer with 0.09% (w/v) sodium azide and 2% sucrose.
<b>Reconstitution &amp; Storage</b>	Add 50 ul of distilled water. Final anti-ARHGEF19 antibody concentration is 1 mg/ml in PBS buffer with 2% sucrose. For longer periods of storage, store at 20°C. Avoid repeat freeze-thaw cycles.
<b>Precautions</b>	ARHGEF19 antibody - middle region is for research use only and not for use in diagnostic or therapeutic procedures.

## Protein Information

---

<b>Name</b>	ARHGEF19
<b>Function</b>	Acts as a guanine nucleotide exchange factor (GEF) for RhoA GTPase.

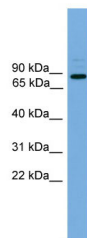
## References

---

Ota T.,et al.Nat. Genet. 36:40-45(2004).  
Gregory S.G.,et al.Nature 441:315-321(2006).

## Images

---



WB Suggested Anti-ARHGEF19 Antibody Titration: 0.2-1  
 $\mu\text{g/ml}$   
Positive Control: Hela cell lysate

Please note: All products are 'FOR RESEARCH USE ONLY. NOT FOR USE IN DIAGNOSTIC OR THERAPEUTIC PROCEDURES'.