

# Eid2 antibody - C-terminal region

Rabbit Polyclonal Antibody

Catalog # AI13515

## Product Information

<b>Application</b>	WB
<b>Primary Accession</b>	<a href="#">Q6X7S9</a>
<b>Other Accession</b>	<a href="#">NM_198425</a> , <a href="#">NP_940817</a>
<b>Reactivity</b>	Human, Mouse, Rat, Dog, Guinea Pig, Bovine
<b>Predicted</b>	Human, Mouse, Rat, Guinea Pig, Bovine
<b>Host</b>	Rabbit
<b>Clonality</b>	Polyclonal
<b>Calculated MW</b>	25304

## Additional Information

<b>Gene ID</b>	386655
<b>Alias Symbol</b>	Cri2, EID-2
<b>Other Names</b>	EP300-interacting inhibitor of differentiation 2, EID-2, CREBBP/EP300 inhibitor 2, EID-1-like inhibitor of differentiation 2, Eid2 {ECO:0000312   EMBL:AAH94513.1, ECO:0000312   MGI:MGI:2681174}
<b>Format</b>	Liquid. Purified antibody supplied in 1x PBS buffer with 0.09% (w/v) sodium azide and 2% sucrose.
<b>Reconstitution &amp; Storage</b>	Add 50 ul of distilled water. Final anti-Eid2 antibody concentration is 1 mg/ml in PBS buffer with 2% sucrose. For longer periods of storage, store at 20°C. Avoid repeat freeze-thaw cycles.
<b>Precautions</b>	Eid2 antibody - C-terminal region is for research use only and not for use in diagnostic or therapeutic procedures.

## Protein Information

<b>Name</b>	Eid2 {ECO:0000312   EMBL:AAH94513.1, ECO:0000312   MGI:MGI:2681174}
<b>Function</b>	Interacts with EP300 and acts as a repressor of MYOD- dependent transcription and muscle differentiation. Inhibits EP300 histone acetyltransferase activity. Acts as a repressor of TGFB/SMAD transcriptional responses. May act as a repressor of the TGFB/SMAD3- dependent signaling by selectively blocking formation of TGFB-induced SMAD3-SMAD4 complex (By similarity).
<b>Cellular Location</b>	Nucleus {ECO:0000250   UniProtKB:Q8N6I1}.

**Tissue Location**

Expressed in heart, brain, kidney and pancreas. Not detected in placenta.

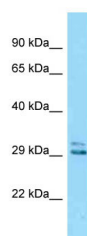
**References**

---

Ji A., et al. Gene 318:35-43(2003).

**Images**

---



WB Suggested Anti-Eid2 Antibody Titration: 1.0 µg/ml  
Positive Control: Mouse Kidney

Please note: All products are 'FOR RESEARCH USE ONLY. NOT FOR USE IN DIAGNOSTIC OR THERAPEUTIC PROCEDURES'.