

# Prss35 Antibody - middle region

Rabbit Polyclonal Antibody

Catalog # AI13519

## Product Information

---

<b>Application</b>	WB
<b>Primary Accession</b>	<a href="#">Q8C0F9</a>
<b>Other Accession</b>	<a href="#">NM_178738</a> , <a href="#">NP_848853</a>
<b>Reactivity</b>	Human, Mouse, Rat, Rabbit, Zebrafish, Dog, Guinea Pig, Horse, Bovine
<b>Predicted</b>	Human, Mouse, Rat, Rabbit, Zebrafish, Pig, Dog, Guinea Pig, Horse, Bovine
<b>Host</b>	Rabbit
<b>Clonality</b>	Polyclonal
<b>Calculated MW</b>	45787

## Additional Information

---

<b>Gene ID</b>	244954
<b>Alias Symbol</b>	6030424L22Rik, P3D9
<b>Other Names</b>	Inactive serine protease 35, Prss35
<b>Format</b>	Liquid. Purified antibody supplied in 1x PBS buffer with 0.09% (w/v) sodium azide and 2% sucrose.
<b>Reconstitution &amp; Storage</b>	Add 50 ul of distilled water. Final anti-Prss35 antibody concentration is 1 mg/ml in PBS buffer with 2% sucrose. For longer periods of storage, store at 20°C. Avoid repeat freeze-thaw cycles.
<b>Precautions</b>	Prss35 Antibody - middle region is for research use only and not for use in diagnostic or therapeutic procedures.

## Protein Information

---

<b>Name</b>	Prss35
<b>Cellular Location</b>	Secreted.
<b>Tissue Location</b>	In ovary, it localizes to the theca cells of pre- antral follicles, the theca and granulosa cells of pre-ovulatory and ovulatory follicles, as well as to the developing corpus luteum

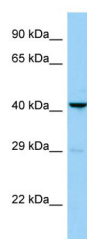
## References

---

Miyakoshi K.,et al.Biol. Reprod. 75:823-835(2006).

## Images

---



Host: Rabbit  
Target Name: Prss35  
Sample Tissue: Mouse Lung lysates  
Antibody Dilution: 1.0µg/ml

Please note: All products are 'FOR RESEARCH USE ONLY. NOT FOR USE IN DIAGNOSTIC OR THERAPEUTIC PROCEDURES'.