

CLECL1 antibody - middle region

Rabbit Polyclonal Antibody

Catalog # AI13524

Product Information

Application	WB
Primary Accession	Q8IZS7
Other Accession	NM_172004 , NP_742001
Reactivity	Human
Predicted	Human
Host	Rabbit
Clonality	Polyclonal
Calculated MW	19115

Additional Information

Alias Symbol	DCAL1
Other Names	C-type lectin-like domain family 1, Dendritic cell-associated lectin 1, DC-associated lectin-1, DCAL-1, CLECL1, DCAL1
Format	Liquid. Purified antibody supplied in 1x PBS buffer with 0.09% (w/v) sodium azide and 2% sucrose.
Reconstitution & Storage	Add 50 ul of distilled water. Final anti-CLECL1 antibody concentration is 1 mg/ml in PBS buffer with 2% sucrose. For longer periods of storage, store at 20°C. Avoid repeat freeze-thaw cycles.
Precautions	CLECL1 antibody - middle region is for research use only and not for use in diagnostic or therapeutic procedures.

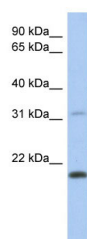
Protein Information

Name	CLECL1P (HGNC:24462)
Function	May function in mediating immune cell-cell interactions. May act as a T-cell costimulatory molecule, enhancing anti-CD3-induced proliferation. May play a role in the interaction of dendritic cells with T-cells and the cells of the adaptive immune response.
Cellular Location	Cell membrane; Single-pass type II membrane protein
Tissue Location	Expressed in spleen, lymph node, and tonsil. Lower expression in peripheral blood, bone marrow, and colon. No expression detected in thymus. Highly expressed in dendritic and B-cells

References

Ryan E.J.,et al.J. Immunol. 169:5638-5648(2002).

Images



WB Suggested Anti-CLECL1 Antibody Titration: 0.2-1
µg/ml
ELISA Titer: 1:12500
Positive Control: Human Placenta

Please note: All products are 'FOR RESEARCH USE ONLY. NOT FOR USE IN DIAGNOSTIC OR THERAPEUTIC PROCEDURES'.