

CNTD1 antibody - N-terminal region

Rabbit Polyclonal Antibody

Catalog # AI13528

Product Information

Application	WB
Primary Accession	Q8N815
Other Accession	NM_173478 , NP_775749
Reactivity	Human, Mouse, Rat, Rabbit, Zebrafish, Pig, Dog, Guinea Pig, Horse, Bovine
Predicted	Human, Mouse, Dog, Guinea Pig, Bovine
Host	Rabbit
Clonality	Polyclonal
Calculated MW	36921

Additional Information

Gene ID	124817
Alias Symbol	CNTD, FLJ40137
Other Names	Cyclin N-terminal domain-containing protein 1, CNTD1, CNTD
Format	Liquid. Purified antibody supplied in 1x PBS buffer with 0.09% (w/v) sodium azide and 2% sucrose.
Reconstitution & Storage	Add 50 ul of distilled water. Final anti-CNTD1 antibody concentration is 1 mg/ml in PBS buffer with 2% sucrose. For longer periods of storage, store at 20°C. Avoid repeat freeze-thaw cycles.
Precautions	CNTD1 antibody - N-terminal region is for research use only and not for use in diagnostic or therapeutic procedures.

Protein Information

Name	CNTD1 (HGNC:26847)
Synonyms	CNTD
Function	Plays a role in the different steps of crossover formation during meiotic recombination. Participates in the crossover differentiation step of crossover-specific recombination intermediates through its interaction with PRR19. In addition, stimulates crossover formation through the interactions with RFC3 and RFC4 and simultaneously regulates cell-cycle progression through interactions with CDC34 and subsequent ubiquitination of WEE1. May also participates in an active deselection process that destabilizes or removes excess pre-CO intermediates.

Cellular Location

Nucleus {ECO:0000250|UniProtKB:Q9D995}. Cytoplasm {ECO:0000250|UniProtKB:Q9D995}. Chromosome {ECO:0000250|UniProtKB:Q9D995}. Note=Shuttles between the nucleus and cytoplasm in a stage-specific manner of prophase I cells. Co-localized at crossover sites with PRR19. {ECO:0000250|UniProtKB:Q9D995}

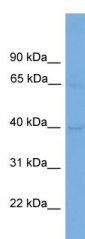
References

Ota T.,et al.Nat. Genet. 36:40-45(2004).

Bechtel S.,et al.BMC Genomics 8:399-399(2007).

Mural R.J.,et al.Submitted (JUL-2005) to the EMBL/GenBank/DDBJ databases.

Images



WB Suggested Anti-CNTD1 Antibody Titration: 0.2-1 µg/ml
Positive Control: ACHN cell lysate

Please note: All products are 'FOR RESEARCH USE ONLY. NOT FOR USE IN DIAGNOSTIC OR THERAPEUTIC PROCEDURES'.