

C8orf45 antibody - middle region

Rabbit Polyclonal Antibody
Catalog # AI13533

Product Information

Application	WB
Primary Accession	Q4G0Z9
Other Accession	NM_173518 , NP_775789
Reactivity	Human, Mouse, Rat, Rabbit, Guinea Pig, Horse, Bovine
Predicted	Guinea Pig
Host	Rabbit
Clonality	Polyclonal
Calculated MW	76219

Additional Information

Gene ID	157777
Alias Symbol	FLJ25692, C8orf45
Other Names	MCM domain-containing protein 2, MCMDC2, C8orf45
Format	Liquid. Purified antibody supplied in 1x PBS buffer with 0.09% (w/v) sodium azide and 2% sucrose.
Reconstitution & Storage	Add 50 ul of distilled water. Final anti-C8orf45 antibody concentration is 1 mg/ml in PBS buffer with 2% sucrose. For longer periods of storage, store at 20°C. Avoid repeat freeze-thaw cycles.
Precautions	C8orf45 antibody - middle region is for research use only and not for use in diagnostic or therapeutic procedures.

Protein Information

Name	MCMDC2
Synonyms	C8orf45
Function	Plays an important role in meiotic recombination and associated DNA double-strand break repair.

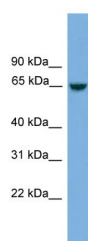
References

Ota T., et al. Nat. Genet. 36:40-45(2004).
Nusbaum C., et al. Nature 439:331-335(2006).

Bechtel S.,et al.BMC Genomics 8:399-399(2007).

Dephoure N.,et al.Proc. Natl. Acad. Sci. U.S.A. 105:10762-10767(2008).

Images



WB Suggested Anti-C8orf45 Antibody Titration: 0.2-1

µg/ml

Positive Control: Jurkat cell lysate

Please note: All products are 'FOR RESEARCH USE ONLY. NOT FOR USE IN DIAGNOSTIC OR THERAPEUTIC PROCEDURES'.