

# IMP5 antibody - middle region

Rabbit Polyclonal Antibody

Catalog # AI13541

## Product Information

---

Application	WB
Primary Accession	<a href="#">Q8IUH8</a>
Other Accession	<a href="#">NM_175882</a> , <a href="#">NP_787078</a>
Reactivity	Human, Yeast
Predicted	Human
Host	Rabbit
Clonality	Polyclonal
Calculated MW	74503

## Additional Information

---

Gene ID	162540
Alias Symbol	SPPL2c, IMP5
Other Names	Signal peptide peptidase-like 2C, SPP-like 2C, SPPL2c, 3.4.23.-, Intramembrane protease 5, IMP-5, SPPL2C, IMP5
Format	Liquid. Purified antibody supplied in 1x PBS buffer with 0.09% (w/v) sodium azide and 2% sucrose.
Reconstitution & Storage	Add 50 ul of distilled water. Final anti-IMP5 antibody concentration is 1 mg/ml in PBS buffer with 2% sucrose. For longer periods of storage, store at 20°C. Avoid repeat freeze-thaw cycles.
Precautions	IMP5 antibody - middle region is for research use only and not for use in diagnostic or therapeutic procedures.

## Protein Information

---

Name	SPPL2C ( <a href="#">HGNC:28902</a> )
Function	Sperm-specific intramembrane-cleaving aspartic protease (I- CLiP) that cleaves distinct tail-anchored proteins and SNARE proteins (PubMed: <a href="#">30733281</a> ). In elongated spermatids, modulates intracellular Ca(2+) homeostasis by controlling PLN abundance through proteolytic cleavage (By similarity). During spermatogenesis, processes SNARE proteins and impacts vesicular trafficking which supports compartmental reorganization in maturing spermatids and may play a role in formation of the acrosome (PubMed: <a href="#">30733281</a> ).
Cellular Location	Endoplasmic reticulum membrane; Multi-pass membrane protein; Lumenal

side

## Tissue Location

Highly expressed in testis where it is primarily localised in spermatids (at protein level)

## References

---

Grigorenko A.P.,et al.Biochemistry (Mosc.) 67:826-834(2002).

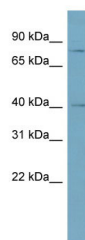
Zody M.C.,et al.Nature 440:1045-1049(2006).

Friedmann E.,et al.J. Biol. Chem. 279:50790-50798(2004).

Friedmann E.,et al.Nat. Cell Biol. 8:843-848(2006).

## Images

---



WB Suggested Anti-IMP5 Antibody Titration: 0.2-1 µg/ml

ELISA Titer: 1:62500

Positive Control: Human Thymus

Please note: All products are 'FOR RESEARCH USE ONLY. NOT FOR USE IN DIAGNOSTIC OR THERAPEUTIC PROCEDURES'.