

# ASB6 antibody - middle region

Rabbit Polyclonal Antibody

Catalog # AI13543

## Product Information

---

<b>Application</b>	WB
<b>Primary Accession</b>	<a href="#">Q9NWX5</a>
<b>Other Accession</b>	<a href="#">NM_017873</a> , <a href="#">NP_060343</a>
<b>Reactivity</b>	Human, Mouse, Rat, Zebrafish, Pig, Dog, Guinea Pig, Horse, Bovine
<b>Predicted</b>	Human, Mouse, Rat, Zebrafish, Pig, Chicken, Dog, Horse, Bovine
<b>Host</b>	Rabbit
<b>Clonality</b>	Polyclonal
<b>Calculated MW</b>	47136

## Additional Information

---

<b>Gene ID</b>	140459
<b>Alias Symbol</b>	FLJ20548, MGC1024
<b>Other Names</b>	Ankyrin repeat and SOCS box protein 6, ASB-6, ASB6
<b>Format</b>	Liquid. Purified antibody supplied in 1x PBS buffer with 0.09% (w/v) sodium azide and 2% sucrose.
<b>Reconstitution &amp; Storage</b>	Add 50 ul of distilled water. Final anti-ASB6 antibody concentration is 1 mg/ml in PBS buffer with 2% sucrose. For longer periods of storage, store at 20°C. Avoid repeat freeze-thaw cycles.
<b>Precautions</b>	ASB6 antibody - middle region is for research use only and not for use in diagnostic or therapeutic procedures.

## Protein Information

---

<b>Name</b>	ASB6
<b>Function</b>	Probable substrate-recognition component of a SCF-like ECS (Elongin-Cullin-SOCS-box protein) E3 ubiquitin-protein ligase complex which mediates the ubiquitination and subsequent proteasomal degradation of target proteins. May play a role in the regulation of cell proliferation and autophagy by promoting the ubiquitination and degradation of SQSTM1 (PubMed: <a href="#">34164402</a> ).
<b>Cellular Location</b>	Cytoplasm.

## References

---

Ota T.,et al.Nat. Genet. 36:40-45(2004).

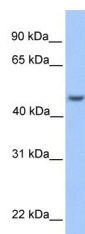
Humphray S.J.,et al.Nature 429:369-374(2004).

Mural R.J.,et al.Submitted (JUL-2005) to the EMBL/GenBank/DDBJ databases.

Kohroki J.,et al.FEBS Lett. 579:6796-6802(2005).

## Images

---



WB Suggested Anti-ASB6 Antibody Titration: 0.2-1 µg/ml

Positive Control: 721\_B cell lysate

ASB6 is supported by BioGPS gene expression data to be expressed in 721\_B

Please note: All products are 'FOR RESEARCH USE ONLY. NOT FOR USE IN DIAGNOSTIC OR THERAPEUTIC PROCEDURES'.