

Grasp antibody - N-terminal region

Rabbit Polyclonal Antibody

Catalog # AI13548

Product Information

Application	WB
Primary Accession	Q9JJA9
Other Accession	NM_019518 , NP_062391
Reactivity	Human, Mouse, Rat, Rabbit, Zebrafish, Pig, Dog, Guinea Pig, Horse, Bovine
Predicted	Human, Mouse, Rat, Rabbit, Zebrafish, Dog, Guinea Pig, Horse, Bovine
Host	Rabbit
Clonality	Polyclonal
Calculated MW	42337

Additional Information

Gene ID	56149
Alias Symbol	tamalin
Other Names	General receptor for phosphoinositides 1-associated scaffold protein, GRP1-associated scaffold protein, Grasp
Format	Liquid. Purified antibody supplied in 1x PBS buffer with 0.09% (w/v) sodium azide and 2% sucrose.
Reconstitution & Storage	Add 50 ul of distilled water. Final anti-Grasp antibody concentration is 1 mg/ml in PBS buffer with 2% sucrose. For longer periods of storage, store at 20°C. Avoid repeat freeze-thaw cycles.
Precautions	Grasp antibody - N-terminal region is for research use only and not for use in diagnostic or therapeutic procedures.

Protein Information

Name	Tamalin {ECO:0000303 PubMed:11850456}
Synonyms	Grasp
Function	Plays a role in intracellular trafficking and contributes to the macromolecular organization of group 1 metabotropic glutamate receptors (mGluRs) at synapses.
Cellular Location	Cytoplasm, perinuclear region {ECO:0000250 UniProtKB:Q8R4T5}. Cell membrane {ECO:0000250 UniProtKB:Q8R4T5}; Peripheral membrane protein {ECO:0000250 UniProtKB:Q8R4T5}; Cytoplasmic side {ECO:0000250 UniProtKB:Q8R4T5}. Postsynaptic cell membrane

{ECO:0000250|UniProtKB:Q8R4T5}

Tissue Location

Highly expressed in brain, heart and lung, and to a lower extent in embryo, kidney and ovary.

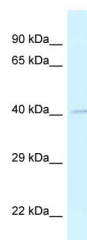
References

Nevrivy D.J.,et al.J. Biol. Chem. 275:16827-16836(2000).

Osada N.,et al.Submitted (APR-2000) to the EMBL/GenBank/DDBJ databases.

Kitano J.,et al.J. Neurosci. 22:1280-1289(2002).

Images



WB Suggested Anti-Grasp Antibody Titration: 1.0 µg/ml
Positive Control: Mouse Small Intestine

Please note: All products are 'FOR RESEARCH USE ONLY. NOT FOR USE IN DIAGNOSTIC OR THERAPEUTIC PROCEDURES'.