

THAP5 antibody - middle region

Rabbit Polyclonal Antibody

Catalog # AI13553

Product Information

Application	WB
Primary Accession	Q7Z6K1
Other Accession	NM_001130475 , NP_001123947
Reactivity	Human, Rat, Pig, Horse
Predicted	Human, Rabbit, Horse
Host	Rabbit
Clonality	Polyclonal
Calculated MW	45416

Additional Information

Gene ID	168451
Other Names	THAP domain-containing protein 5, THAP5
Format	Liquid. Purified antibody supplied in 1x PBS buffer with 0.09% (w/v) sodium azide and 2% sucrose.
Reconstitution & Storage	Add 50 ul of distilled water. Final anti-THAP5 antibody concentration is 1 mg/ml in PBS buffer with 2% sucrose. For longer periods of storage, store at 20°C. Avoid repeat freeze-thaw cycles.
Precautions	THAP5 antibody - middle region is for research use only and not for use in diagnostic or therapeutic procedures.

Protein Information

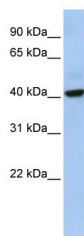
Name	THAP5
Function	Has sequence-specific DNA-binding activity and can function as transcriptional repressor (in vitro) (PubMed: 21110952). May be a regulator of cell cycle: THAP5 overexpression in human cell lines causes cell cycle arrest at G2/M phase (PubMed: 19502560).
Cellular Location	Nucleus
Tissue Location	Detected in heart (PubMed: 19502560 , PubMed: 21195082). Detected in brain and muscle (at protein level) (PubMed: 19502560). Highly expressed in the heart. Also found in brain and skeletal muscle (PubMed: 19502560 , PubMed: 21195082)

References

Scherer S.W.,et al.Science 300:767-772(2003).

Balakrishnan M.P.,et al.Am. J. Physiol. 297:H643-H653(2009).

Images



WB Suggested Anti-THAP5 Antibody Titration: 0.2-1 µg/ml

ELISA Titer: 1:312500

Positive Control: Human Placenta

Please note: All products are 'FOR RESEARCH USE ONLY. NOT FOR USE IN DIAGNOSTIC OR THERAPEUTIC PROCEDURES'.