

# TCTE1 Antibody - C-terminal region

Rabbit Polyclonal Antibody

Catalog # AI13555

## Product Information

Application	WB
Primary Accession	<a href="#">Q5JU00</a>
Other Accession	<a href="#">NM_182539</a> , <a href="#">NP_872345</a>
Reactivity	Human, Mouse, Rat, Rabbit, Zebrafish, Pig, Guinea Pig, Horse
Predicted	Human, Mouse, Rat, Rabbit, Pig, Dog, Guinea Pig, Horse
Host	Rabbit
Clonality	Polyclonal
Calculated MW	55632

## Additional Information

Gene ID	202500
Alias Symbol	D6S46
Other Names	T-complex-associated testis-expressed protein 1, Tcte-1, TCTE1
Format	Liquid. Purified antibody supplied in 1x PBS buffer with 0.09% (w/v) sodium azide and 2% sucrose.
Reconstitution & Storage	Add 50 ul of distilled water. Final anti-TCTE1 antibody concentration is 1 mg/ml in PBS buffer with 2% sucrose. For longer periods of storage, store at 20°C. Avoid repeat freeze-thaw cycles.
Precautions	TCTE1 Antibody - C-terminal region is for research use only and not for use in diagnostic or therapeutic procedures.

## Protein Information

Name	DRC5 ( <a href="#">HGNC:11693</a> )
Synonyms	TCTE1
Function	Component of the nexin-dynein regulatory complex (N-DRC) a key regulator of ciliary/flagellar motility which maintains the alignment and integrity of the distal axoneme and regulates microtubule sliding in motile axonemes. May play a role in the assembly of N-DRC. May be required for sperm motility.
Cellular Location	Cell projection, cilium, flagellum {ECO:0000250 UniProtKB:A6H639}. Cytoplasm, cytoskeleton, flagellum axoneme {ECO:0000250 UniProtKB:A8HMZ4}. Note=Detected along the length of the sperm flagellum. {ECO:0000250 UniProtKB:A6H639}

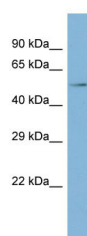
## References

---

Ota T.,et al.Nat. Genet. 36:40-45(2004).  
Mungall A.J.,et al.Nature 425:805-811(2003).

## Images

---



Host: Rabbit  
Target Name: TCTE1  
Sample Tissue: Fetal Stomach lysates  
Antibody Dilution: 1.0µg/ml

Please note: All products are 'FOR RESEARCH USE ONLY. NOT FOR USE IN DIAGNOSTIC OR THERAPEUTIC PROCEDURES'.