

MROH8 Antibody - C-terminal region

Rabbit Polyclonal Antibody

Catalog # AI13574

Product Information

Application	WB
Primary Accession	Q9H579
Reactivity	Human
Predicted	Human, Mouse, Rat, Rabbit, Dog, Guinea Pig, Horse, Bovine
Host	Rabbit
Clonality	Polyclonal
Calculated MW	54816

Additional Information

Gene ID	140699
Alias Symbol Other Names	MROH8, C20orf131, C20orf132, Protein MROH8, Maestro heat-like repeat-containing protein family member 8, MROH8, C20orf131, C20orf132
Format	Liquid. Purified antibody supplied in 1x PBS buffer with 0.09% (w/v) sodium azide and 2% sucrose.
Reconstitution & Storage	Add 50 μ l of distilled water. Final Anti-MROH8 antibody concentration is 1 mg/ml in PBS buffer with 2% sucrose. For longer periods of storage, store at -20°C. Avoid repeat freeze-thaw cycles.
Precautions	MROH8 Antibody - C-terminal region is for research use only and not for use in diagnostic or therapeutic procedures.

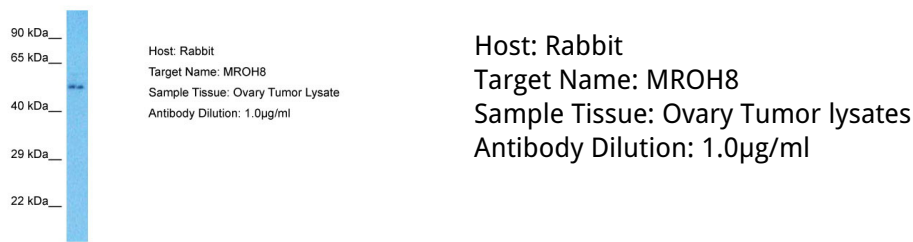
Protein Information

Name	MROH8
Synonyms	C20orf131, C20orf132

References

Ota T., et al. Nat. Genet. 36:40-45(2004).
Deloukas P., et al. Nature 414:865-871(2001).
Bechtel S., et al. BMC Genomics 8:399-399(2007).

Images



Please note: All products are 'FOR RESEARCH USE ONLY. NOT FOR USE IN DIAGNOSTIC OR THERAPEUTIC PROCEDURES'.