

C3orf49 antibody - middle region

Rabbit Polyclonal Antibody

Catalog # AI13576

Product Information

Application	WB
Primary Accession	Q96BT1
Other Accession	EAW65417
Reactivity	Human, Rat, Rabbit, Dog, Horse, Bovine
Predicted	Dog, Horse, Bovine
Host	Rabbit
Clonality	Polyclonal
Calculated MW	33461

Additional Information

Gene ID	132200
Alias Symbol	MGC17310
Other Names	Putative uncharacterized protein C3orf49, C3orf49
Format	Liquid. Purified antibody supplied in 1x PBS buffer with 0.09% (w/v) sodium azide and 2% sucrose.
Reconstitution & Storage	Add 50 ul of distilled water. Final anti-C3orf49 antibody concentration is 1 mg/ml in PBS buffer with 2% sucrose. For longer periods of storage, store at 20°C. Avoid repeat freeze-thaw cycles.
Precautions	C3orf49 antibody - middle region is for research use only and not for use in diagnostic or therapeutic procedures.

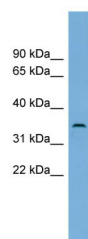
Protein Information

Name	C3orf49
-------------	---------

References

Muzny D.M., et al. Nature 440:1194-1198(2006).

Images



WB Suggested Anti-C3orf49 Antibody Titration: 0.2-1
 $\mu\text{g/ml}$
Positive Control: OVCAR-3 cell lysate

Please note: All products are 'FOR RESEARCH USE ONLY. NOT FOR USE IN DIAGNOSTIC OR THERAPEUTIC PROCEDURES'.