

# ADAM2 antibody - N-terminal region

Rabbit Polyclonal Antibody

Catalog # AI13581

## Product Information

---

<b>Application</b>	WB
<b>Primary Accession</b>	<a href="#">Q99965</a>
<b>Other Accession</b>	<a href="#">NM_001464</a> , <a href="#">NP_001455</a>
<b>Reactivity</b>	Human, Rat, Pig
<b>Predicted</b>	Human, Rat, Pig
<b>Host</b>	Rabbit
<b>Clonality</b>	Polyclonal
<b>Calculated MW</b>	82457

## Additional Information

---

<b>Gene ID</b>	2515
<b>Alias Symbol</b>	CRYN1, CRYN2, CT15, FTNB, PH-30b, PH30
<b>Other Names</b>	Disintegrin and metalloproteinase domain-containing protein 2, ADAM 2, Cancer/testis antigen 15, CT15, Fertilin subunit beta, PH-30, PH30, PH30-beta, ADAM2, FTNB
<b>Format</b>	Liquid. Purified antibody supplied in 1x PBS buffer with 0.09% (w/v) sodium azide and 2% sucrose.
<b>Reconstitution &amp; Storage</b>	Add 50 ul of distilled water. Final anti-ADAM2 antibody concentration is 1 mg/ml in PBS buffer with 2% sucrose. For longer periods of storage, store at 20°C. Avoid repeat freeze-thaw cycles.
<b>Precautions</b>	ADAM2 antibody - N-terminal region is for research use only and not for use in diagnostic or therapeutic procedures.

## Protein Information

---

<b>Name</b>	ADAM2
<b>Synonyms</b>	FTNB
<b>Function</b>	Sperm surface membrane protein that may be involved in sperm- egg plasma membrane adhesion and fusion during fertilization. Could have a direct role in sperm-zona binding or migration of sperm from the uterus into the oviduct. Interactions with egg membrane could be mediated via binding between its disintegrin-like domain to one or more integrins receptors on the egg. This is a non catalytic metalloprotease-like protein.

<b>Cellular Location</b>	Membrane; Single-pass type I membrane protein.
<b>Tissue Location</b>	Expressed specifically in spermatogenic cells in the seminiferous cells. Not detected in fetal tissues

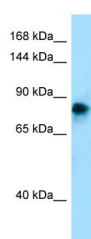
## References

---

Vidaeus C.M.,et al.Mol. Reprod. Dev. 46:363-369(1997).  
Gupta S.K.,et al.Biochem. Biophys. Res. Commun. 224:318-326(1996).  
Burkin H.R.,et al.Genomics 40:190-192(1997).  
Hall L.,et al.Submitted (APR-1999) to the EMBL/GenBank/DDBJ databases.

## Images

---



WB Suggested Anti-ADAM2 Antibody Titration: 1.0 µg/ml  
Positive Control: Fetal Skin

Please note: All products are 'FOR RESEARCH USE ONLY. NOT FOR USE IN DIAGNOSTIC OR THERAPEUTIC PROCEDURES'.