

# ADAM7 antibody - C-terminal region

Rabbit Polyclonal Antibody

Catalog # AI13586

## Product Information

---

<b>Application</b>	WB
<b>Primary Accession</b>	<a href="#">Q9H2U9</a>
<b>Other Accession</b>	<a href="#">NM_003817</a> , <a href="#">NP_003808</a>
<b>Reactivity</b>	Human, Mouse, Dog, Horse
<b>Predicted</b>	Human, Mouse, Dog, Horse
<b>Host</b>	Rabbit
<b>Clonality</b>	Polyclonal
<b>Calculated MW</b>	85669

## Additional Information

---

<b>Gene ID</b>	8756
<b>Alias Symbol</b>	EAPI, GP-83, GP83, ADAM 7, ADAM-7
<b>Other Names</b>	Disintegrin and metalloproteinase domain-containing protein 7, ADAM 7, Sperm maturation-related glycoprotein GP-83, ADAM7, GP83
<b>Format</b>	Liquid. Purified antibody supplied in 1x PBS buffer with 0.09% (w/v) sodium azide and 2% sucrose.
<b>Reconstitution &amp; Storage</b>	Add 50 ul of distilled water. Final anti-ADAM7 antibody concentration is 1 mg/ml in PBS buffer with 2% sucrose. For longer periods of storage, store at 20°C. Avoid repeat freeze-thaw cycles.
<b>Precautions</b>	ADAM7 antibody - C-terminal region is for research use only and not for use in diagnostic or therapeutic procedures.

## Protein Information

---

<b>Name</b>	ADAM7 ( <a href="#">HGNC:214</a> )
<b>Function</b>	Required for normal male fertility via maintenance of epithelial cell morphology in the caput epididymis and subsequently correct epididymis lumen structure required for sperm development (By similarity). Plays a role in sperm motility, flagella morphology and tyrosine phosphorylation during sperm capacitation (By similarity). Plays a role in normal expression levels of HSPA5, ITM2B and ADAM2 in sperm both prior to and post-capacitation (By similarity). This is a non catalytic metalloprotease-like protein (By similarity).
<b>Cellular Location</b>	Membrane; Single-pass type I membrane protein

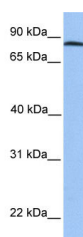
## References

---

Lin Y.C.,et al.Submitted (DEC-1999) to the EMBL/GenBank/DDBJ databases.  
Ota T.,et al.Nat. Genet. 36:40-45(2004).  
Nusbaum C.,et al.Nature 439:331-335(2006).  
Liu H.W.,et al.Submitted (SEP-1998) to the EMBL/GenBank/DDBJ databases.  
Wei X.,et al.Hum. Mutat. 32:E2148-E2175(2011).

## Images

---



WB Suggested Anti-ADAM7 Antibody Titration: 0.2-1  
µg/ml  
Positive Control: Hela cell lysate

Please note: All products are 'FOR RESEARCH USE ONLY. NOT FOR USE IN DIAGNOSTIC OR THERAPEUTIC PROCEDURES'.