

LPP antibody - N-terminal region

Rabbit Polyclonal Antibody

Catalog # AI13591

Product Information

Application	WB
Primary Accession	Q93052
Other Accession	NM_005578 , NP_005569
Reactivity	Human, Mouse, Rabbit, Dog, Horse, Bovine
Predicted	Human, Mouse, Rabbit, Dog, Horse, Bovine
Host	Rabbit
Clonality	Polyclonal
Calculated MW	65746

Additional Information

Gene ID	4026
Other Names	Lipoma-preferred partner, LIM domain-containing preferred translocation partner in lipoma, LPP
Format	Liquid. Purified antibody supplied in 1x PBS buffer with 0.09% (w/v) sodium azide and 2% sucrose.
Reconstitution & Storage	Add 50 ul of distilled water. Final anti-LPP antibody concentration is 1 mg/ml in PBS buffer with 2% sucrose. For longer periods of storage, store at 20°C. Avoid repeat freeze-thaw cycles.
Precautions	LPP antibody - N-terminal region is for research use only and not for use in diagnostic or therapeutic procedures.

Protein Information

Name	LPP
Function	May play a structural role at sites of cell adhesion in maintaining cell shape and motility. In addition to these structural functions, it may also be implicated in signaling events and activation of gene transcription. May be involved in signal transduction from cell adhesion sites to the nucleus allowing successful integration of signals arising from soluble factors and cell-cell adhesion sites. Also suggested to serve as a scaffold protein upon which distinct protein complexes are assembled in the cytoplasm and in the nucleus.
Cellular Location	Nucleus. Cytoplasm. Cell junction. Cell membrane. Note=Found in the nucleus, in the cytoplasm and at cell adhesion sites Shuttles between the

cytoplasm and the nucleus. It has been found in sites of cell adhesion such as cell-to-cell contact and focal adhesion which are membrane attachment sites of cells to the extracellular matrix. Mainly nuclear when fused with HMGA2/HMGIC and KMT2A/MLL1

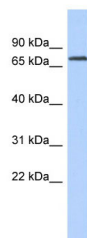
Tissue Location

Expressed in a wide variety of tissues but no or very low expression in brain and peripheral leukocytes

References

Petit M.M.R.,et al.Genomics 36:118-129(1996).
Ebert L.,et al.Submitted (JUN-2004) to the EMBL/GenBank/DDBJ databases.
Mural R.J.,et al.Submitted (SEP-2005) to the EMBL/GenBank/DDBJ databases.
Lemke I.,et al.Cytogenet. Cell Genet. 95:153-156(2001).
Petit M.M.,et al.Cancer Genet. Cytogenet. 106:18-23(1998).

Images



WB Suggested Anti-LPP Antibody Titration: 0.2-1 µg/ml
ELISA Titer: 1:312500
Positive Control: COLO205 cell lysate
LPP is supported by BioGPS gene expression data to be expressed in COLO205

Please note: All products are 'FOR RESEARCH USE ONLY. NOT FOR USE IN DIAGNOSTIC OR THERAPEUTIC PROCEDURES'.