

Nbr1 antibody - C-terminal region

Rabbit Polyclonal Antibody

Catalog # AI13592

Product Information

| | |
|--------------------------|-------------------------------------------------------|
| Application | WB |
| Primary Accession | P97432 |
| Other Accession | NM_008676 , NP_032702 |
| Reactivity | Human, Mouse, Rat, Rabbit, Pig, Dog, Horse, Bovine |
| Predicted | Human, Mouse, Rat, Rabbit, Dog, Horse, Bovine |
| Host | Rabbit |
| Clonality | Polyclonal |
| Calculated MW | 109958 |

Additional Information

| | |
|-------------------------------------|-----------------------------------------------------------------------------------------------------------------------------------------------------------------------------------------------|
| Gene ID | 17966 |
| Alias Symbol | mKIAA0049 |
| Other Names | Next to BRCA1 gene 1 protein, Membrane component chromosome 17 surface marker 2 homolog, Neighbor of BRCA1 gene 1 protein, Nbr1, M17s2 |
| Format | Liquid. Purified antibody supplied in 1x PBS buffer with 0.09% (w/v) sodium azide and 2% sucrose. |
| Reconstitution & Storage | Add 50 ul of distilled water. Final anti-Nbr1 antibody concentration is 1 mg/ml in PBS buffer with 2% sucrose. For longer periods of storage, store at 20°C. Avoid repeat freeze-thaw cycles. |
| Precautions | Nbr1 antibody - C-terminal region is for research use only and not for use in diagnostic or therapeutic procedures. |

Protein Information

| | |
|-----------------|--------------------------------------------------------------------------------------------------------------------------------------------------------------------------------------------------------------------------------------------------------------------------------------------------------------------------------------------------------------------------------------------------------------------------------------------------------------------------------------------------------------------------------------------------------------------------------------------------------------------------------------|
| Name | Nbr1 |
| Synonyms | M17s2 |
| Function | Ubiquitin-binding autophagy adapter that participates in different processes including host defense or intracellular homeostasis (PubMed: 31916398 , PubMed: 34374750). Possesses a double function during the selective autophagy by acting as a shuttle bringing ubiquitinated proteins to autophagosomes and also by participating in the formation of protein aggregates. Plays a role in the regulation of the innate immune response by modulating type I interferon production and targeting ubiquitinated IRF3 for autophagic degradation (By similarity). In response to oxidative stress, |

promotes an increase in SQSTM1 levels, phosphorylation, and body formation by preventing its autophagic degradation (PubMed:[31916398](#)). In turn, activates the KEAP1- NRF2/NFE2L2 antioxidant pathway (PubMed:[31916398](#)). Also plays non- autophagy role by mediating the shuttle of IL-12 to late endosome for subsequent secretion (PubMed:[34374750](#)).

Cellular Location

Cytoplasm. Cytoplasmic vesicle, autophagosome {ECO:0000250|UniProtKB:Q14596} Lysosome {ECO:0000250|UniProtKB:Q14596}. Cytoplasm, myofibril, sarcomere, M line {ECO:0000250|UniProtKB:Q501R9}. Note=In cardiac muscles localizes to the sarcomeric M line (By similarity). Is targeted to lysosomes for degradation (By similarity) {ECO:0000250|UniProtKB:Q14596, ECO:0000250|UniProtKB:Q501R9, ECO:0000269|PubMed:31916398}

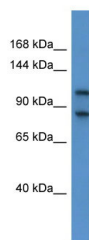
Tissue Location

Expressed in brain.

References

Chambers J.A.,et al.Genomics 38:305-313(1996).
Dimitrov S.,et al.Gene 262:89-98(2001).

Images



WB Suggested Anti-Nbr1 Antibody Titration: 0.2-1 µg/ml
ELISA Titer: 1:1562500
Positive Control: Mouse Spleen

Please note: All products are 'FOR RESEARCH USE ONLY. NOT FOR USE IN DIAGNOSTIC OR THERAPEUTIC PROCEDURES'.