

STAG3 antibody - middle region

Rabbit Polyclonal Antibody

Catalog # AI13597

Product Information

Application	WB
Primary Accession	Q9UJ98
Other Accession	NM_012447 , NP_036579
Reactivity	Human, Zebrafish
Predicted	Human
Host	Rabbit
Clonality	Polyclonal
Calculated MW	139034

Additional Information

Gene ID	10734
Other Names	Cohesin subunit SA-3, SCC3 homolog 3, Stromal antigen 3, Stromalin-3, STAG3
Format	Liquid. Purified antibody supplied in 1x PBS buffer with 0.09% (w/v) sodium azide and 2% sucrose.
Reconstitution & Storage	Add 50 ul of distilled water. Final anti-STAG3 antibody concentration is 1 mg/ml in PBS buffer with 2% sucrose. For longer periods of storage, store at 20°C. Avoid repeat freeze-thaw cycles.
Precautions	STAG3 antibody - middle region is for research use only and not for use in diagnostic or therapeutic procedures.

Protein Information

Name	STAG3
Function	Meiosis specific component of cohesin complex. The cohesin complex is required for the cohesion of sister chromatids after DNA replication. The cohesin complex apparently forms a large proteinaceous ring within which sister chromatids can be trapped. At anaphase, the complex is cleaved and dissociates from chromatin, allowing sister chromatids to segregate. The meiosis-specific cohesin complex probably replaces mitosis specific cohesin complex when it dissociates from chromatin during prophase I.
Cellular Location	Nucleus {ECO:0000255 PROSITE-ProRule:PRU00750, ECO:0000269 PubMed:12034751}. Chromosome Chromosome, centromere. Note=Associates with chromatin. In prophase I stage of meiosis, it is found along the axial elements of synaptonemal complexes. In

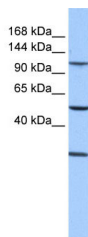
late-pachytene-diplotene, the bulk of protein dissociates from the chromosome arms probably because of phosphorylation by PLK1, except at centromeres, where cohesin complexes remain. It however remains chromatin associated at the centromeres up to metaphase I. During anaphase I, it probably dissociates from centromeres, allowing chromosomes segregation

Tissue Location Testis specific.

References

Pezzi N.,et al.FASEB J. 14:581-592(2000).
Bechtel S.,et al.BMC Genomics 8:399-399(2007).
Ota T.,et al.Nat. Genet. 36:40-45(2004).
Hillier L.W.,et al.Nature 424:157-164(2003).
Mural R.J.,et al.Submitted (SEP-2005) to the EMBL/GenBank/DDBJ databases.

Images



WB Suggested Anti-STAG3 Antibody Titration: 0.2-1 µg/ml
Positive Control: 721_B cell lysate
STAG3 is supported by BioGPS gene expression data to be expressed in 721_B

Please note: All products are 'FOR RESEARCH USE ONLY. NOT FOR USE IN DIAGNOSTIC OR THERAPEUTIC PROCEDURES'.