

SCCPDH antibody - C-terminal region

Rabbit Polyclonal Antibody

Catalog # AI13603

Product Information

Application	WB
Primary Accession	Q8NBX0
Other Accession	NM_016002 , NP_057086
Reactivity	Human, Rat, Dog, Guinea Pig, Horse
Predicted	Human, Horse
Host	Rabbit
Clonality	Polyclonal
Calculated MW	47151

Additional Information

Gene ID	51097
Alias Symbol	CGI-49, FLJ43187, RP11-439E19.2, NET11
Other Names	Saccharopine dehydrogenase-like oxidoreductase, 1.-.-, SCCPDH
Format	Liquid. Purified antibody supplied in 1x PBS buffer with 0.09% (w/v) sodium azide and 2% sucrose.
Reconstitution & Storage	Add 50 ul of distilled water. Final anti-SCCPDH antibody concentration is 1 mg/ml in PBS buffer with 2% sucrose. For longer periods of storage, store at 20°C. Avoid repeat freeze-thaw cycles.
Precautions	SCCPDH antibody - C-terminal region is for research use only and not for use in diagnostic or therapeutic procedures.

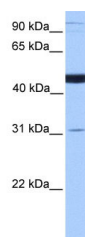
Protein Information

Name	SCCPDH
-------------	--------

References

Lai C.-H.,et al.Genome Res. 10:703-713(2000).
Ota T.,et al.Nat. Genet. 36:40-45(2004).
Gregory S.G.,et al.Nature 441:315-321(2006).
Bienvenut W.V.,et al.Submitted (JAN-2010) to UniProtKB.
Burkard T.R.,et al.BMC Syst. Biol. 5:17-17(2011).

Images



WB Suggested Anti-SCCPDH Antibody Titration: 0.2-1
µg/ml
Positive Control: Human Muscle

Please note: All products are 'FOR RESEARCH USE ONLY. NOT FOR USE IN DIAGNOSTIC OR THERAPEUTIC PROCEDURES'.