

SPATA6 antibody - middle region

Rabbit Polyclonal Antibody

Catalog # AI13610

Product Information

Application	WB
Primary Accession	Q9NWH7
Other Accession	NM_019073 , NP_061946
Reactivity	Human, Mouse, Rat, Rabbit, Pig, Dog, Guinea Pig, Horse, Bovine
Predicted	Human, Mouse, Rat, Rabbit, Pig, Chicken, Dog, Guinea Pig
Host	Rabbit
Clonality	Polyclonal
Calculated MW	55989

Additional Information

Gene ID	54558
Alias Symbol	FLJ10007, SRF-1, SRF1, HASH
Other Names	Spermatogenesis-associated protein 6, SPATA6
Format	Liquid. Purified antibody supplied in 1x PBS buffer with 0.09% (w/v) sodium azide and 2% sucrose.
Reconstitution & Storage	Add 50 ul of distilled water. Final anti-SPATA6 antibody concentration is 1 mg/ml in PBS buffer with 2% sucrose. For longer periods of storage, store at 20°C. Avoid repeat freeze-thaw cycles.
Precautions	SPATA6 antibody - middle region is for research use only and not for use in diagnostic or therapeutic procedures.

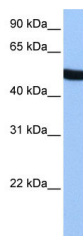
Protein Information

Name	SPATA6
Function	Required for formation of the sperm connecting piece during spermiogenesis. Sperm connecting piece is essential for linking the developing flagellum to the head during late spermiogenesis. May be involved in myosin-based microfilament transport through interaction with myosin subunits.
Cellular Location	Secreted {ECO:0000250 UniProtKB:Q3U6K5}. Cell projection, cilium, flagellum {ECO:0000250 UniProtKB:Q3U6K5} Note=Specifically localizes to the segmented columns and the capitulum of the sperm connecting piece. {ECO:0000250 UniProtKB:Q3U6K5}

References

Ota T.,et al.Nat. Genet. 36:40-45(2004).
Gregory S.G.,et al.Nature 441:315-321(2006).
Ficarro S.,et al.J. Biol. Chem. 278:11579-11589(2003).

Images



WB Suggested Anti-SPATA6 Antibody Titration: 0.2-1
µg/ml
Positive Control: HepG2 cell lysate

Please note: All products are 'FOR RESEARCH USE ONLY. NOT FOR USE IN DIAGNOSTIC OR THERAPEUTIC PROCEDURES'.