

# C17orf39 antibody - C-terminal region

Rabbit Polyclonal Antibody

Catalog # AI13613

## Product Information

<b>Application</b>	WB
<b>Primary Accession</b>	<a href="#">Q8IVV7</a>
<b>Other Accession</b>	<a href="#">NM_024052</a> , <a href="#">NP_076957</a>
<b>Reactivity</b>	Human, Mouse, Rat, Rabbit, Zebrafish, Dog, Horse, Bovine
<b>Predicted</b>	Human, Rabbit, Chicken, Dog, Horse
<b>Host</b>	Rabbit
<b>Clonality</b>	Polyclonal
<b>Calculated MW</b>	33514

## Additional Information

<b>Gene ID</b>	79018
<b>Alias Symbol</b>	MGC3048, C17orf39
<b>Other Names</b>	Glucose-induced degradation protein 4 homolog, Vacuolar import and degradation protein 24 homolog, GID4, C17orf39, VID24
<b>Format</b>	Liquid. Purified antibody supplied in 1x PBS buffer with 0.09% (w/v) sodium azide and 2% sucrose.
<b>Reconstitution &amp; Storage</b>	Add 50 ul of distilled water. Final anti-C17orf39 antibody concentration is 1 mg/ml in PBS buffer with 2% sucrose. For longer periods of storage, store at 20°C. Avoid repeat freeze-thaw cycles.
<b>Precautions</b>	C17orf39 antibody - C-terminal region is for research use only and not for use in diagnostic or therapeutic procedures.

## Protein Information

<b>Name</b>	GID4
<b>Synonyms</b>	C17orf39, VID24
<b>Function</b>	Substrate-recognition subunit of the CTLH E3 ubiquitin- protein ligase complex that selectively accepts ubiquitin from UBE2H and mediates ubiquitination and subsequent proteasomal degradation of the transcription factor HBP1 (Probable) (PubMed: <a href="#">29911972</a> ). Binds proteins and peptides with a Pro/N-degron consisting of an unmodified N-terminal Pro followed by a small residue, and has the highest affinity for the peptide Pro-Gly-Leu-Trp (PubMed: <a href="#">29632410</a> ). Binds peptides with an N-terminal sequence of the type Pro-[Ala,Gly]- [Leu,Met,Gln,Ser,Tyr]-[Glu,Gly,His,Ser,Val,Trp,Tyr]. Does not bind

peptides with an acetylated N-terminal Pro residue (PubMed:[29632410](#)).

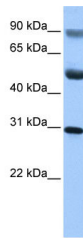
## References

---

Ota T.,et al.Nat. Genet. 36:40-45(2004).  
Zody M.C.,et al.Nature 440:1045-1049(2006).

## Images

---



WB Suggested Anti-C17orf39 Antibody Titration: 0.2-1  
 $\mu\text{g/ml}$   
Positive Control: HepG2 cell lysate

Please note: All products are 'FOR RESEARCH USE ONLY. NOT FOR USE IN DIAGNOSTIC OR THERAPEUTIC PROCEDURES'.