

C10orf68 antibody - N-terminal region

Rabbit Polyclonal Antibody

Catalog # AI13617

Product Information

Application	WB
Primary Accession	Q9H943
Other Accession	NM_024688 , NP_078964
Reactivity	Human
Predicted	Human
Host	Rabbit
Clonality	Polyclonal
Calculated MW	69 KDa

Additional Information

Alias Symbol	FLJ13031, MGC149767, dJ1104A8.1, RP11-479G22.1
Other Names	Uncharacterized protein C10orf68, C10orf68
Format	Liquid. Purified antibody supplied in 1x PBS buffer with 0.09% (w/v) sodium azide and 2% sucrose.
Reconstitution & Storage	Add 50 ul of distilled water. Final anti-C10orf68 antibody concentration is 1 mg/ml in PBS buffer with 2% sucrose. For longer periods of storage, store at 20°C. Avoid repeat freeze-thaw cycles.
Precautions	C10orf68 antibody - N-terminal region is for research use only and not for use in diagnostic or therapeutic procedures.

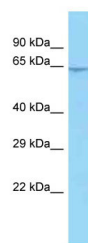
Protein Information

References

Ota T., et al. Nat. Genet. 36:40-45(2004).
Deloukas P., et al. Nature 429:375-381(2004).

Images

WB Suggested Anti-C10orf68 Antibody Titration: 1.0 µg/ml
Positive Control: 293T Whole Cell C10orf68 is supported
by BioGPS gene expression data to be expressed in



HEK293T

Please note: All products are 'FOR RESEARCH USE ONLY. NOT FOR USE IN DIAGNOSTIC OR THERAPEUTIC PROCEDURES'.