

Chodl antibody - C-terminal region

Rabbit Polyclonal Antibody

Catalog # AI13619

Product Information

Application	WB
Primary Accession	Q9CXM0
Other Accession	NM_139134 , NP_624360
Reactivity	Human, Mouse, Rat, Rabbit, Dog, Guinea Pig, Horse, Bovine
Predicted	Human, Mouse, Rat, Rabbit, Dog, Guinea Pig, Bovine
Host	Rabbit
Clonality	Polyclonal
Calculated MW	30331

Additional Information

Gene ID	246048
Alias Symbol	3110074E07Rik, MT75, PRED12
Other Names	Chondrolectin, Transmembrane protein MT75, Chodl
Format	Liquid. Purified antibody supplied in 1x PBS buffer with 0.09% (w/v) sodium azide and 2% sucrose.
Reconstitution & Storage	Add 50 ul of distilled water. Final anti-Chodl antibody concentration is 1 mg/ml in PBS buffer with 2% sucrose. For longer periods of storage, store at 20°C. Avoid repeat freeze-thaw cycles.
Precautions	Chodl antibody - C-terminal region is for research use only and not for use in diagnostic or therapeutic procedures.

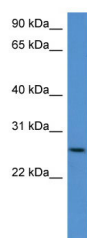
Protein Information

Name	Chodl
Function	May play a role in the development of the nervous system such as in neurite outgrowth and elongation (PubMed: 24067532). May be involved in motor axon growth and guidance (By similarity).
Cellular Location	Membrane; Single-pass type I membrane protein
Tissue Location	In adult mice preferentially expressed in skeletal muscle, testis, brain, and lung. Expressed in striated muscle (at protein level). Expressed in spinal cord. Detected in spinal cord fast motor neurons (at protein level).

References

Weng L.,et al.Submitted (OCT-2000) to the EMBL/GenBank/DDBJ databases.
Carninci P.,et al.Science 309:1559-1563(2005).
Church D.M.,et al.PLoS Biol. 7:E1000112-E1000112(2009).

Images



WB Suggested Anti-Chodl Antibody Titration: 0.2-1 μ g/ml
ELISA Titer: 1:1562500
Positive Control: Mouse Kidney

Please note: All products are 'FOR RESEARCH USE ONLY. NOT FOR USE IN DIAGNOSTIC OR THERAPEUTIC PROCEDURES'.