

AMH antibody - middle region

Rabbit Polyclonal Antibody
Catalog # AI13633

Product Information

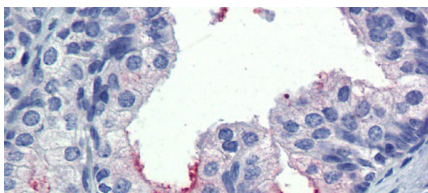
Application	WB, IHC
Primary Accession	Q6GTN3
Other Accession	NM_000479 , NP_000470
Reactivity	Human, Mouse, Rat, Pig, Dog, Guinea Pig, Horse, Bovine, Sheep
Predicted	Mouse, Dog, Guinea Pig, Bovine
Host	Rabbit
Clonality	Polyclonal
Calculated MW	57 KDa

Additional Information

Alias Symbol	MIF, MIS
Format	Liquid. Purified antibody supplied in 1x PBS buffer with 0.09% (w/v) sodium azide and 2% sucrose.
Reconstitution & Storage	Add 50 ul of distilled water. Final anti-AMH antibody concentration is 1 mg/ml in PBS buffer with 2% sucrose. For longer periods of storage, store at 20°C. Avoid repeat freeze-thaw cycles.
Precautions	AMH antibody - middle region is for research use only and not for use in diagnostic or therapeutic procedures.

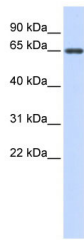
Protein Information

Images



Immunohistochemistry with Human Prostate lysate tissue at an antibody concentration of 5.0µg/ml using anti-AMH antibody (AI13633)

WB Suggested Anti-AMH Antibody Titration: 1 µg/ml
Positive Control: Fetal Small Intestine cell lysate



Please note: All products are 'FOR RESEARCH USE ONLY. NOT FOR USE IN DIAGNOSTIC OR THERAPEUTIC PROCEDURES'.