

IL5 antibody - middle region

Rabbit Polyclonal Antibody

Catalog # AI13638

Product Information

Application	WB
Primary Accession	P04401
Other Accession	NM_010558 , NP_034688
Reactivity	Human, Mouse, Rat, Rabbit, Guinea Pig
Predicted	Human, Mouse, Rat, Guinea Pig
Host	Rabbit
Clonality	Polyclonal
Calculated MW	15410

Additional Information

Gene ID	16191
Alias Symbol	IL-5
Other Names	Interleukin-5, IL-5, B-cell growth factor II, BCGF-II, Cytotoxic T-lymphocyte inducer, Eosinophil differentiation factor, T-cell replacing factor, TRF, IL5, IL-5
Format	Liquid. Purified antibody supplied in 1x PBS buffer with 0.09% (w/v) sodium azide and 2% sucrose.
Reconstitution & Storage	Add 50 ul of distilled water. Final anti-IL5 antibody concentration is 1 mg/ml in PBS buffer with 2% sucrose. For longer periods of storage, store at 20°C. Avoid repeat freeze-thaw cycles.
Precautions	IL5 antibody - middle region is for research use only and not for use in diagnostic or therapeutic procedures.

Protein Information

Name	IL5
Synonyms	IL-5
Function	Homodimeric cytokine expressed predominantly by T-lymphocytes and NK cells that plays an important role in the survival, differentiation, and chemotaxis of eosinophils (PubMed: 10444455 , PubMed: 1873482). Also acts on activated and resting B-cells to induce immunoglobulin production, growth, and differentiation (PubMed: 3128631). Mechanistically, exerts its biological effects through a receptor composed of IL5RA subunit and the cytokine receptor common subunit beta/CSF2RB. Binding to the receptor leads to activation of various kinases including LYN, SYK and JAK2 and thereby

propagates signals through the RAS-MAPK and JAK-STAT5 pathways respectively (By similarity).

Cellular Location

Secreted.

Tissue Location

Expressed in lymphoid cells, including spleen, thymus, lymph nodes and peripheral blood mononuclear cells

References

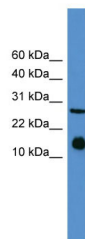
Campbell H.D.,et al.Eur. J. Biochem. 174:345-352(1988).

Kinashi T.,et al.Nature 324:70-73(1986).

Mizuta T.R.,et al.Growth Factors 1:51-57(1988).

Takahashi T.,et al.Mol. Immunol. 27:911-920(1990).

Images



WB Suggested Anti-IL5 Antibody Titration: 0.2-1 µg/ml

ELISA Titer: 1:312500

Positive Control: Mouse Spleen

Please note: All products are 'FOR RESEARCH USE ONLY. NOT FOR USE IN DIAGNOSTIC OR THERAPEUTIC PROCEDURES'.