

TUSC1 antibody - middle region

Rabbit Polyclonal Antibody

Catalog # AI13639

Product Information

Application	WB
Primary Accession	Q2TAM9
Other Accession	NM_001004125 , NP_001004125
Reactivity	Human, Mouse, Pig, Bovine
Predicted	Human, Mouse, Pig, Bovine
Host	Rabbit
Clonality	Polyclonal
Calculated MW	23105

Additional Information

Gene ID	286319
Alias Symbol	MGC131751, TSG-9, TSG9
Other Names	Tumor suppressor candidate gene 1 protein, TSG-9, TSG9, TUSC1
Format	Liquid. Purified antibody supplied in 1x PBS buffer with 0.09% (w/v) sodium azide and 2% sucrose.
Reconstitution & Storage	Add 50 ul of distilled water. Final anti-TUSC1 antibody concentration is 1 mg/ml in PBS buffer with 2% sucrose. For longer periods of storage, store at 20°C. Avoid repeat freeze-thaw cycles.
Precautions	TUSC1 antibody - middle region is for research use only and not for use in diagnostic or therapeutic procedures.

Protein Information

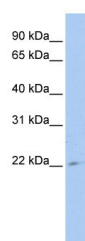
Name	TUSC1
Tissue Location	Widely expressed at low level. Expressed at higher level in testis, weakly expressed in muscle, colon, lung and spleen Not detected in 3 non small cell lung carcinoma (NSCLC) cell lines with homozygous deletion of the 9p region, while it is down-regulated in 3 other tumor cell lines.

References

Shan Z.,et al.Oncogene 23:6612-6620(2004).
Humphray S.J.,et al.Nature 429:369-374(2004).

Olsen J.V.,et al.Cell 127:635-648(2006).
Burkard T.R.,et al.BMC Syst. Biol. 5:17-17(2011).

Images



WB Suggested Anti-TUSC1 Antibody Titration: 0.2-1 µg/ml
ELISA Titer: 1:62500
Positive Control: 721_B cell lysate

Please note: All products are 'FOR RESEARCH USE ONLY. NOT FOR USE IN DIAGNOSTIC OR THERAPEUTIC PROCEDURES'.