

C9orf153 antibody - middle region

Rabbit Polyclonal Antibody
Catalog # AI13643

Product Information

Application	WB
Primary Accession	Q5TBE3
Other Accession	NM_001010907 , EAW62711
Reactivity	Human
Predicted	Human
Host	Rabbit
Clonality	Polyclonal
Calculated MW	11254

Additional Information

Gene ID	389766
Alias Symbol	bA507D14.1
Other Names	Uncharacterized protein C9orf153, C9orf153
Format	Liquid. Purified antibody supplied in 1x PBS buffer with 0.09% (w/v) sodium azide and 2% sucrose.
Reconstitution & Storage	Add 50 ul of distilled water. Final anti-C9orf153 antibody concentration is 1 mg/ml in PBS buffer with 2% sucrose. For longer periods of storage, store at 20°C. Avoid repeat freeze-thaw cycles.
Precautions	C9orf153 antibody - middle region is for research use only and not for use in diagnostic or therapeutic procedures.

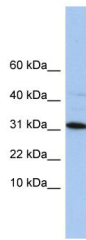
Protein Information

Name	C9orf153
-------------	----------

References

Humphray S.J., et al. Nature 429:369-374(2004).

Images



WB Suggested Anti-C9orf153 Antibody Titration: 0.2-1
 $\mu\text{g/ml}$
ELISA Titer: 1:12500
Positive Control: HepG2 cell lysate

Please note: All products are 'FOR RESEARCH USE ONLY. NOT FOR USE IN DIAGNOSTIC OR THERAPEUTIC PROCEDURES'.