

# CCDC7 antibody - N-terminal region

Rabbit Polyclonal Antibody

Catalog # AI13651

## Product Information

---

<b>Application</b>	WB
<b>Primary Accession</b>	<a href="#">Q96M83</a>
<b>Other Accession</b>	<a href="#">NM_001026383</a> , <a href="#">NP_001021554</a>
<b>Reactivity</b>	Human, Mouse, Rat, Rabbit, Horse, Bovine
<b>Predicted</b>	Human, Mouse, Rat, Horse, Bovine
<b>Host</b>	Rabbit
<b>Clonality</b>	Polyclonal
<b>Calculated MW</b>	157448

## Additional Information

---

<b>Gene ID</b>	79741
<b>Alias Symbol</b> <b>Other Names</b>	BioT2-A, BioT2-B, BioT2-C, DKFZp686N0559, FLJ32762, RP11-479G22.1 Coiled-coil domain-containing protein 7, Protein BIOT2, CCDC7, BIOT2
<b>Format</b>	Liquid. Purified antibody supplied in 1x PBS buffer with 0.09% (w/v) sodium azide and 2% sucrose.
<b>Reconstitution &amp; Storage</b>	Add 50 ul of distilled water. Final anti-CCDC7 antibody concentration is 1 mg/ml in PBS buffer with 2% sucrose. For longer periods of storage, store at 20°C. Avoid repeat freeze-thaw cycles.
<b>Precautions</b>	CCDC7 antibody - N-terminal region is for research use only and not for use in diagnostic or therapeutic procedures.

## Protein Information

---

<b>Name</b>	CCDC7
<b>Synonyms</b>	BIOT2, C10orf68
<b>Function</b>	May play a role in tumorigenesis.
<b>Tissue Location</b>	Expressed in epithelium of normal cervix and cervical cancer. Overexpressed in early and interim cervical cancer

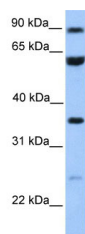
## References

---

Ota T.,et al.Nat. Genet. 36:40-45(2004).  
Deloukas P.,et al.Nature 429:375-381(2004).  
Mural R.J.,et al.Submitted (SEP-2005) to the EMBL/GenBank/DDBJ databases.  
Shen Y.M.,et al.Oncol. Rep. 25:75-80(2011).

## Images

---



WB Suggested Anti-CCDC7 Antibody Titration: 0.2-1 µg/ml  
Positive Control: Jurkat cell lysate

Please note: All products are 'FOR RESEARCH USE ONLY. NOT FOR USE IN DIAGNOSTIC OR THERAPEUTIC PROCEDURES'.