

TRAK1 antibody - middle region

Rabbit Polyclonal Antibody

Catalog # AI13660

Product Information

Application	WB
Primary Accession	Q9UPV9
Other Accession	NM_001042646 , NP_001036111
Reactivity	Human, Rat, Rabbit, Pig, Dog, Horse, Bovine
Predicted	Human, Rat, Rabbit, Pig, Chicken, Dog, Horse, Bovine
Host	Rabbit
Clonality	Polyclonal
Calculated MW	106040

Additional Information

Gene ID	22906
Alias Symbol	OIP106, MILT1
Other Names	Trafficking kinesin-binding protein 1, 106 kDa O-GlcNAc transferase-interacting protein, TRAK1, KIAA1042, OIP106
Format	Liquid. Purified antibody supplied in 1x PBS buffer with 0.09% (w/v) sodium azide and 2% sucrose.
Reconstitution & Storage	Add 50 ul of distilled water. Final anti-TRAK1 antibody concentration is 1 mg/ml in PBS buffer with 2% sucrose. For longer periods of storage, store at 20°C. Avoid repeat freeze-thaw cycles.
Precautions	TRAK1 antibody - middle region is for research use only and not for use in diagnostic or therapeutic procedures.

Protein Information

Name	TRAK1
Synonyms	KIAA1042, OIP106
Function	Involved in the regulation of endosome-to-lysosome trafficking, including endocytic trafficking of EGF-EGFR complexes and GABA-A receptors (PubMed: 18675823). Involved in mitochondrial motility. When O-glycosylated, abolishes mitochondrial motility. Crucial for recruiting OGT to the mitochondrial surface of neuronal processes (PubMed: 24995978). TRAK1 and RHOT form an essential protein complex that links KIF5 to mitochondria for light chain-independent, anterograde transport of mitochondria (By similarity).

Cellular Location

Cytoplasm. Nucleus. Mitochondrion. Early endosome. Endosome. Mitochondrion membrane. Cytoplasm, cell cortex {ECO:0000250|UniProtKB:Q6PD31}. Note=Predominantly associated with early endosome. The localization to early endosomes depends on its interaction with HGS/HRS (PubMed:18675823). Colocalizes with MGARP at the mitochondria (PubMed:19528298).

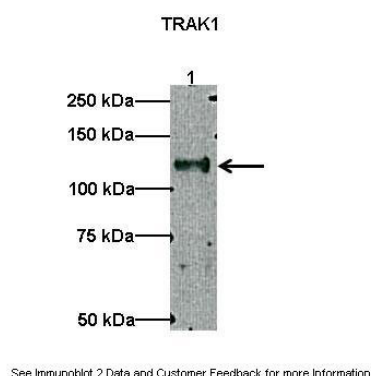
Tissue Location

High expression in spinal cord and moderate expression in all other tissues and specific brain regions examined Expressed in all cell lines examined.

References

Kikuno R.,et al.DNA Res. 6:197-205(1999).
Bechtel S.,et al.BMC Genomics 8:399-399(2007).
Muzny D.M.,et al.Nature 440:1194-1198(2006).
Iyer S.P.N.,et al.J. Biol. Chem. 278:5399-5409(2003).
Brickley K.,et al.J. Biol. Chem. 280:14723-14732(2005).

Images



Lanes: Lane1: 10 ug myc-hTRAK1 transfected HEK293 lysate
Primary Antibody Dilution: 1:500
Secondary Antibody: Anti-rabbit HRP
Secondary Antibody Dilution: 1:2000
Gene Name: TRAK1
Submitted by: Gulcin Pekkurnaz, F.M. Kirby Neurobiology Center

Please note: All products are 'FOR RESEARCH USE ONLY. NOT FOR USE IN DIAGNOSTIC OR THERAPEUTIC PROCEDURES'.